

Dos and Don'ts for General Science & Ability Paper

MON TUE WED THS FRI SAT
○ ○ ○ ○ ○ ○

Hi there, you've done well. Know that

acquiring knowledge is one thing and reproducing it in paper according to what's asked is another. There are a few things I would like to highlight.

1. A 5 marks part requires 2 sides (not more than that) of a paper. Know that there can be two or three parts of a question and their marks are divided accordingly. So, address all of them in a just manner.

2. Focus on time management. You get 35 minutes to solve one question and about 8 minutes per 5 mark part. Manage your time accordingly.

3. You need to understand that your paper is supposed to look more scientific than theoretical. So, add flowcharts and diagrams where required.

4. Your handwriting and neatness can be really impactful. Avoid cutting and overwriting.

5. Focus on your spellings and your grammar. Here, in GSA there's no deduction in marks but your expression will definitely create an impact.

6. In ability portion, give explanation for analytical ability question in words. You need to understand that a 5 mark part requires all steps written and explained.

Good luck for ~~merit~~ 2025. You're gonna rock in sha Allah. :)

Date: ___/___/20___

1. Proper equipment issue:

Solid waste management lacks proper equipment such as trucks, bulldozers, loading mini trucks, protected uniforms for workers with modern masks of oxygen. These are unable for management to properly operate.

2. Recruitment issues:

Recruitment is also one of the problems in the solid waste management. Jobs are offered on the basis of contract. Therefore, this sector could maintain proper work force to operate timely.

3. Salaries Problem

Solid waste is one of the most challenging jobs. The workers have been paid less. Thus, it has pushed the

Date: / / 20

sector into chaos.

4. Basic Facilities

Basic facilities have not been given to the employs such as health care, transport, and so on and so forth.

(c)

Dengue fever refers to a fever which is caused by the bite of mosquito. According to World Health Organization (WHO) the followings are symptoms of Dengue fever.

- (1) pain in body
- (2) High temperature of the body
- (3) weakness
- (4) Yellowish of eyes
- (5) Vomiting etc

(d)

Plate tectonics in tsunami

Plate tectonics cause earthquake in the underbeath of the

Date: ___/___/20___

MON TUE WED THS FRI
○ ○ ○ ○ ○ ○

Oceans. Consequently, tsunami comes into existence. Plate tectonics is one of the reasons behind the formation of tsunami.

Difference between Richter magnitude scale and volcanic explosivity index.

Richter magnitude is used to determine the magnitude of an earthquake. On the other hand, volcanic explosivity index is being used to determine the power of eruption of volcanic activity.

Date: ___/___/20___

Q. No. 4

(a)

Pakistan is one of the countries that can utilise the process ^{renewable} energy to fulfill its energy gap. Pakistan numerous sources for the renewable energy:

1. Solar energy:

The installation solar energy can enable Pakistan to generate much electricity by solar panels. That is one of regions in Sindh which support the installation plant of solar energy. Pakistani government should install ~~power~~ power plants so as to fulfill requirement.

2. Wind energy

Northern areas of Pakistan play profound role to support wind plants. Wind energy is generated by power of air and

Date: ___ / ___ / 20___

MON TUE WED THS FRI
○ ○ ○ ○ ○

restored in the generator. Moreover, it is further utilized to fulfill the energy needs of urban centers. Pakistan must install wind power plants across the country so as to tackle energy insecurity in the country.

3. Hydro power plants:

Pakistan can also generate energy from flow of water. Pakistan should install hydro power plants near lakes and dams to generate gen energy.

Case study of Norway: Norway generates its 98% energy from hydro power plants. Hydro power plants not only reduce the dependency of Pakistan on imported hydrocarbons but also assist to generate cheap energy.

Date: ___/___/20___

1. Nuclear energy:

Nuclear power plants play tremendous roles in the generation of energy. According to IAEA Pakistan can encounter the current energy crisis if it shifts to nuclear energy. The installation of nuclear power plant needs much amount but can be achieved with assistance of investors and friendly nations. Thus, Pakistan shift towards renewable energy to overcome the existing challenges of energy.

(b)

Sun is one of the largest objects in solar system. This is the source of energy too. 98% energy has been produced by the heat of the Sun. Sun has different parts. These parts can be understood through the structure of the Sun.

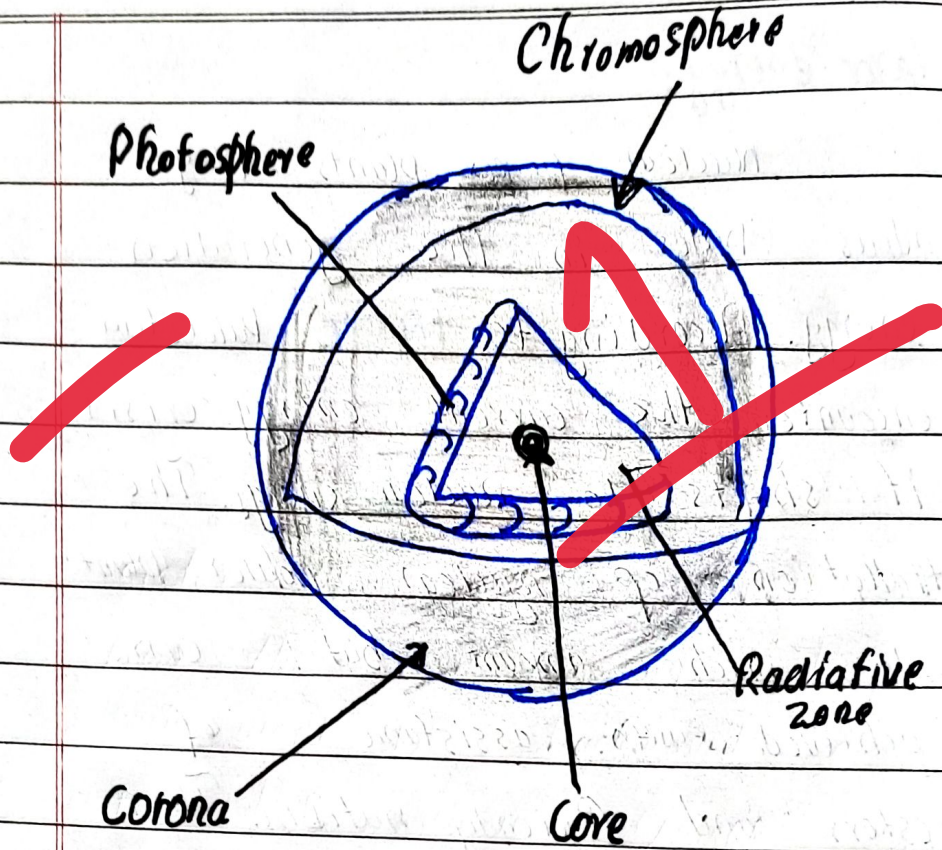


Figure 0.1 Structure of the Sun

(c)

Ceramics are inorganic non-metallic solids from clay that are shaped and hardened by high temperature heating.

Examples includes bricks, plates, glasses and cups.

Ceramics can be recycled and they can be used to

Date: / / 20

Form new materials by heating and making so new things.

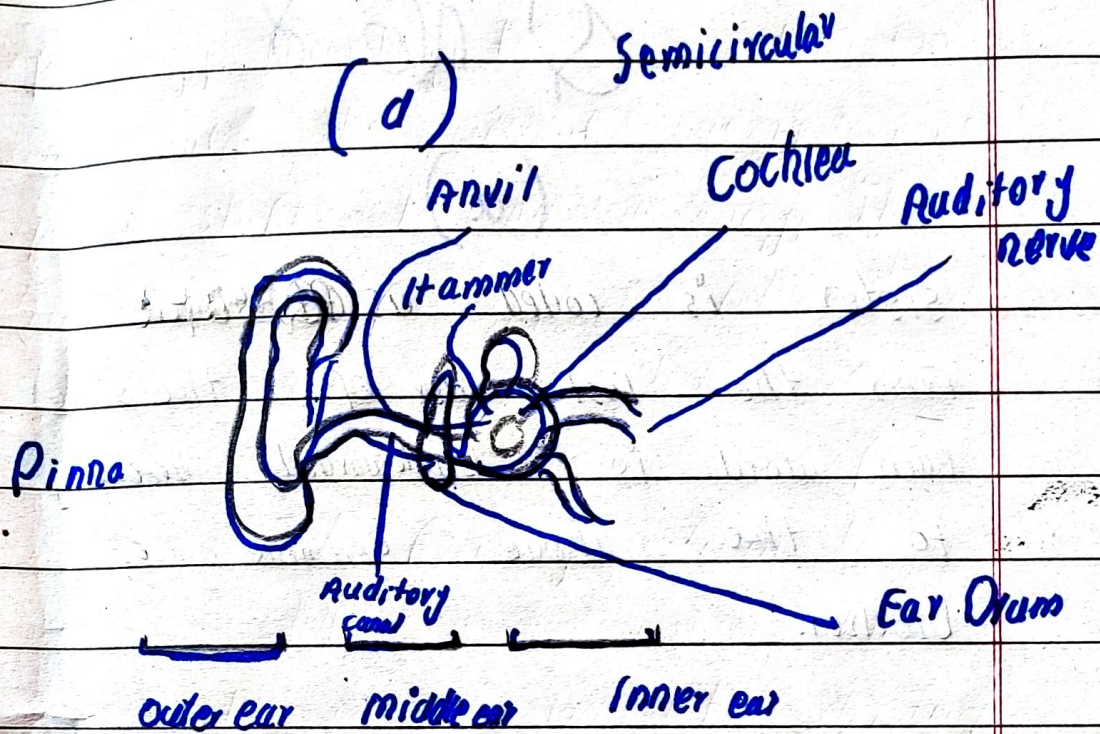


Figure 0.2 ear structure

Pinna: outer most part

Ear drum: it is a jelly like membrane

External auditory: this is the tube that connects the outer ear to the inside or middle ear.

Date: 7/1/20

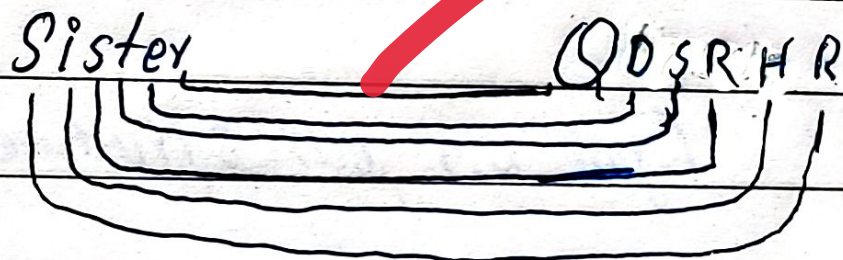
Section-2

Q No. 8

(a)

Sister is coded as QDSRHR

From the last letter of the sister
each word is backwarded according
to the above example of
brother.



(b)

1, 2, 6, 21, 24

~~2x3=6
7x3=21
8x3=24~~

Q No. 7

(c)

Age of 5 students

20, 22, 21, 21, 23

① mean

$$\frac{20 + 22 + 21 + 21 + 23}{5} = \frac{107}{5}$$

mean = 21.4

② median

20, 21, 21, 22, 23

median = 21

③ mode

20, 21, 21, 22, 23

mode = 21

④ Range

20, 21, 21, 22, 23

$$20 - 23 = 3$$

Range = 3