

GSA

Part - II

Section - I

Q NO. 3

(a)

Technological advancement has increased food production. First of all, the use of technology such as crop cutting machines, chemicals (fertilizers) and pesticides have not only increased the food production but also harmed and decreased the quality of food. The quality of food is being decreased due to profound utilization of fertilizers and pesticides that have spoiled the land and soil to produce quality of foods.

(B)

Solid waste management have been facing numerous problems:

Date: ___/___/20___

1. Proper equipment issue:

Solid waste management lacks proper equipment such as trucks, bulldozers, loading mini trucks, protected uniforms for workers with modern masks of oxygen. These are unable for management to properly operate.

2. Recruitment issues:

Recruitment is also one of the problems in the solid waste management. Jobs are offered on the basis of contract. Therefore, this sector could maintain proper work force to operate timely.

3. Salaries Problem

Solid waste is one of the most challenging jobs. The workers have been paid less. Thus, it has pushed the

Date: ___/___/20___

sector into chaos.

4. Basic Facilities

Basic facilities have not been given to the employs such as health care, transport, ~~and~~ so on and so forth.

(c)

Dengue fever refers to a fever which is caused by the bite of mosquito. According to World Health Organization (WHO) the followings are symptoms of Dengue fever.

- (1) pain in body
- (2) High temperature of the body
- (3) weakness
- (4) Yellowish of eyes
- (5) Vomiting etc

(d)

Plate tectonics in tsunami

Plate tectonics cause earthquake in the underbeath of the

Date: ___/___/20___

MON TUE WED THS FRI
○ ○ ○ ○ ○ ○

Oceans. Consequently, tsunami comes into existence. Plate tectonics is one of the reasons behind the formation of tsunami.

Difference between Richter magnitude Scale and Volcanic explosivity index.

Richter magnitude is used to determine the magnitude of an earthquake. On the other hand, Volcanic explosivity index is being used to determine the power of eruption of volcanic activity.

Date: ___/___/20___

Q. No. 4

(a)

Pakistan is one of the countries that can utilise the process ^{renewable} energy to fulfill its energy gap. Pakistan numerous sources for the renewable energy:

1. Solar energy:

The installation solar energy can enable Pakistan to generate much electricity by solar panels. That is one of regions in Sindh which support the installation plant of solar energy. Pakistani government should install ~~the~~ power plants so as to fulfill requirement.

2. Wind energy:

Northern areas of Pakistan play profound role to support wind plants. Wind energy is generated by power of air and

restored in the generator. Moreover, it is further utilised to fulfill the energy needs of urban centers. Pakistan must install wind power plants across the country so as to tackle energy insecurity in the country.

3. Hydro power plants:

Pakistan can also generate energy from flow of water. Pakistan should install hydro power plants near lakes and dams to generate gen energy.

Case study of Norway: Norway generates its 98% energy from hydro power plants. Hydro power plants not only reduce the dependency of Pakistan on imported hydrocarbons but also assist to generate cheap energy.

Date: ___/___/20___

1. Nuclear energy:

Nuclear power plants play tremendous roles in the generation of energy. According to IAEA Pakistan can encounter the current energy crisis if it shifts to nuclear energy. The installation of nuclear power plant needs much amount but can be achieved with assistance of investors and friendly nations. Thus, Pakistan shift towards renewable energy to overcome the existing challenges of energy.

(b)

Sun is one of the largest objects in solar system. This is the source of energy too. 98% energy has been produced by the heat of the Sun. Sun has different parts. These parts can be understood through the structure of the Sun.

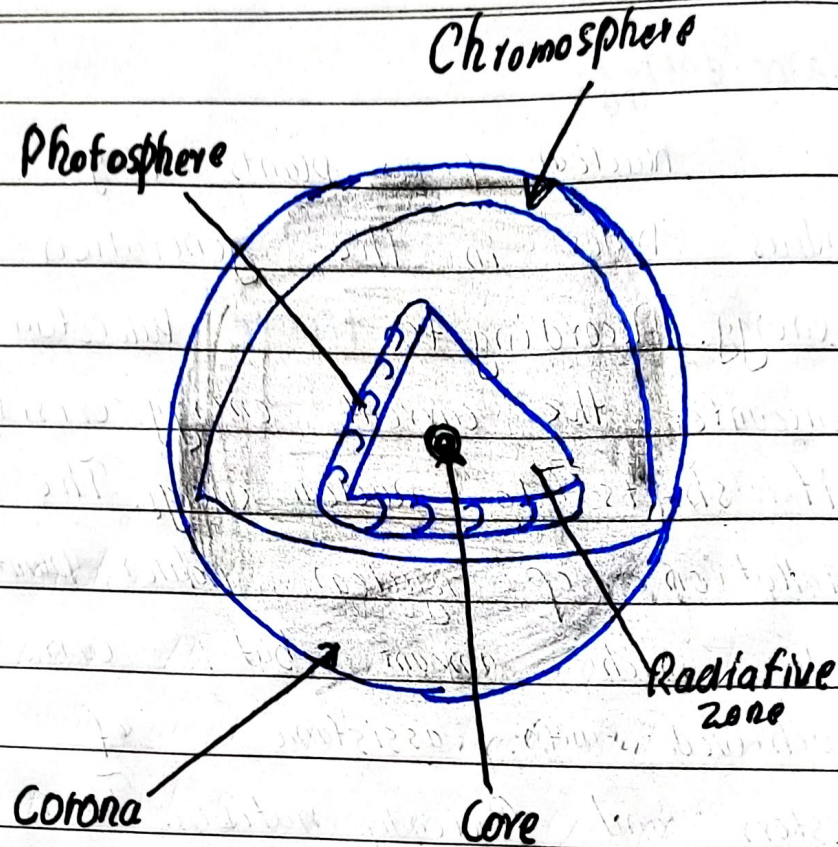


Figure 0.1 Structure of the Sun

(c)

Ceramics are inorganic non-metallic solids from clay that are shaped and hardened by high temperature heating.

Examples include bricks, plates, glasses and cups.

Ceramics can be recycled and they can be used to

Date: ___/___/20___

Form new materials by heating and making so new things.

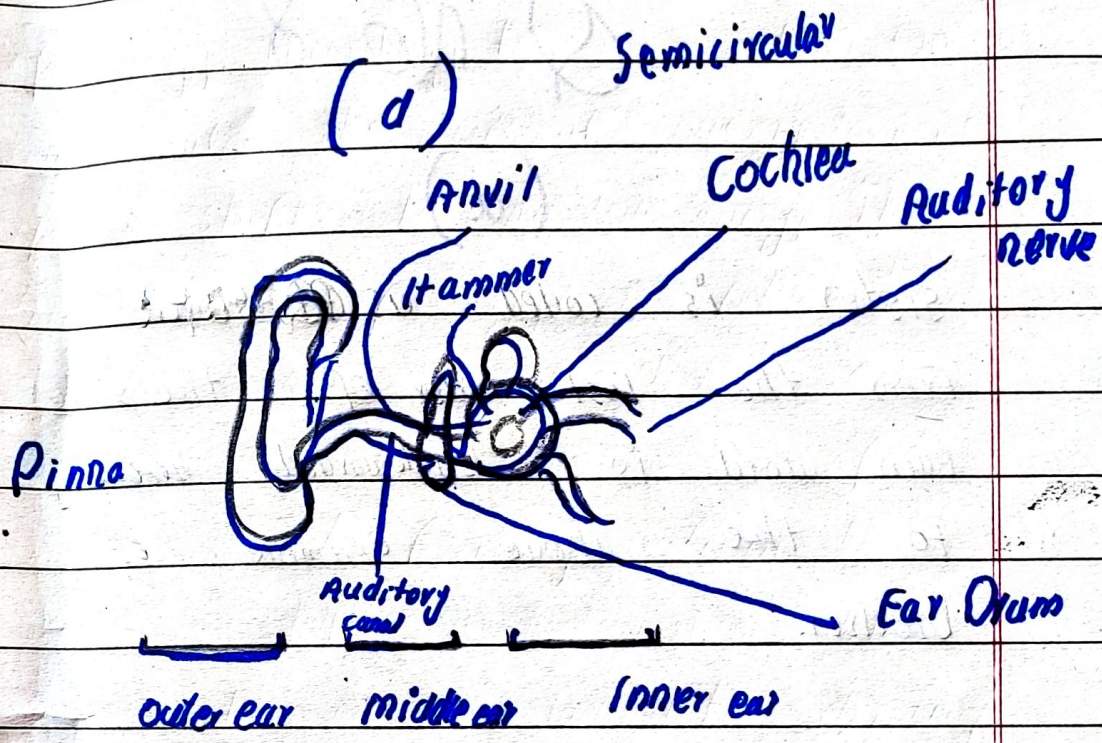


Figure 0.2 ear structure

Pinna: outer most part

Ear drum: it is a jelly like membrane.

External auditory: this is the tube that connects the outer ear to the inside or middle ear.

Date: 7/1/20

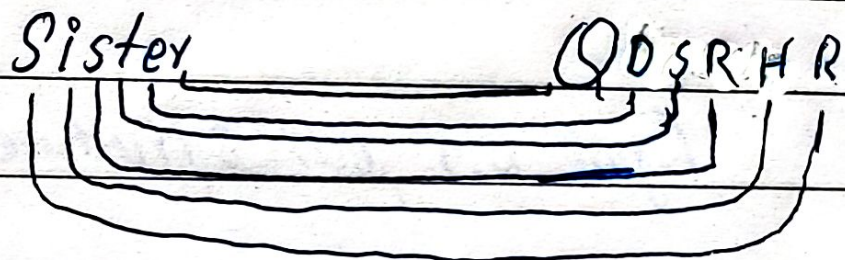
Section-2

Q No. 8

(a)

Sister is coded as QDSRHR

From the last letter of the sister
each word is backwarded according
to the above example of
brother.



(b)

1, 2, 6, 21, 24

$$2 \times 3 = 6$$

$$7 \times 3 = 21$$

$$8 \times 3 = 24$$

Date: ___/___/20___

MON TUE WED THS FRI SAT
○ ○ ○ ○ ○ ○

Q No. 7

(c)

Age 5 students

20, 22, 21, 21, 23

① mean

$$\frac{20 + 22 + 21 + 21 + 23}{5} = \frac{107}{5}$$

mean = 21.4

② median

20, 21, 21, 22, 23

median = 21

③ mode

20, 21, 21, 22, 23

mode = 21

④ Range

20, 21, 21, 22, 23

$$20 - 23 = 3$$

Range = 3