

Dos and Don'ts for General Science & Ability Paper

Section II

Question 6

Hi there, you've done well. Know that acquiring knowledge is one thing and reproducing it in paper according to what's asked is another.

There are a few things I would like to highlight.

1. A 5 marks part requires at least 2 and at max 3 sides of a paper. Know that there can be two or three parts of a question and their marks are divided accordingly. So, address all of them in a just manner.

2. Focus on time management. You get 35 minutes to solve one question and about 8 minutes per 5 mark part. Manage your time accordingly.

3. You need to understand that your paper is supposed to look more scientific than theoretical. So, add flowcharts and diagrams where required.

4. Your handwriting and neatness can be really impactful. Avoid cutting and overwriting.

5. Focus on your spellings and your grammar. Here, in GSA there's no deduction in marks but your expression will definitely create an impact.

6. In ability portion, give explanation for analytical ability question in words. You need to understand that a 5 mark part requires all steps written and explained.

Good luck for CSS 2025. You're gonna rock in sha Allah. :)

a) Ratio of Blocks = 4:3:1
Block A = 50 times more than the B
Number blocks = 50

Solution
Let number of blocks = $4x + 3x + x = 50$
and equate the

Statement
A = 50 times more than B
 $4x = 50 + 3x \Rightarrow 4x - 3x = 50 \Rightarrow x = 50$

Since $A = B$ then $7(50) \Rightarrow \boxed{350}$
So, the number of blocks 'B' are 87.

b) Pair of shoes = 80 \$
Discount = 15 %
Sales Tax = 10 %

Solution
Finding discount amount = 15% of 80 $\Rightarrow 12$

Discounted Price = Original - Discounted Price
 $= 80 - 12 \Rightarrow 68$

Sales Tax Price = 10% of 68 $\Rightarrow 0.10 \times 68 = 6.8$

Final Price = Discounted P + Sales tax P
 $= 68 + 6.8 \Rightarrow \boxed{74.8}$

Distance train travelled = 42 km
Average Speed = 36 km/h
Time taken = ?

Solution

$$\therefore t = \frac{\text{Distance}}{\text{Speed}} = \frac{42 \text{ km}}{36 \text{ km/h}} \Rightarrow \frac{7}{6} \text{ hours}$$

$t = 1 \text{ hour and } 10 \text{ mins.}$

Adding t into departure time (4:00 PM)

Arrival Time = 5:10 PM

Unscrambled words :

Supintendent

White

Question 7

a) Cylinder radius $r = 30 \text{ cm} =$
Height $h = 1 \text{ m} \Rightarrow 100 \text{ cm}$
Volume $V = ?$

Solution

$$\therefore V = \pi r^2 h$$

Putting values in the formula,

$$V = \pi (30 \text{ cm})^2 (100 \text{ cm})$$

$$= 90000 \pi \text{ cm}^3$$

b) Average age of 3 boys = 15 years
 Ages ratio = 3:5:7
 Age of the youngest = ?

Solution

Let x be the ages, $3x, 5x, 7x$

\therefore Average age = $\frac{\text{Mean}}{\text{No. of boys}}$

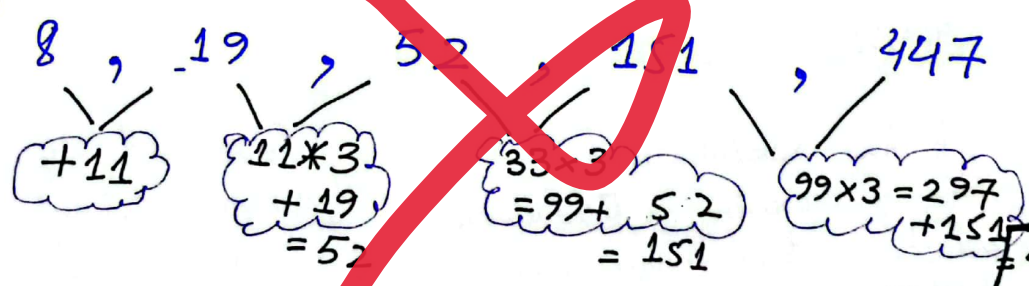
$\frac{15x}{3} = 15 \Rightarrow 5x = 15$

$x = 3$ So the age of the youngest boy :-

$3x \Rightarrow 9$

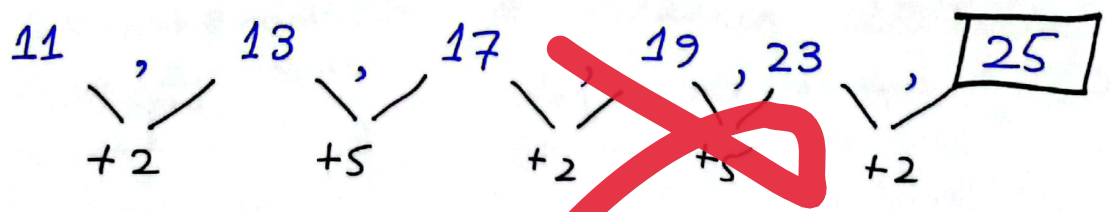
c) Identified series :-

if wrong number will be 447 because the pattern being followed is :-



448 and not 447
 So, 447 is wrong

The correct answer is 25 because:



Section I

Question 2

Artificial Intelligence the new electricity

Following is the tabulation of similarities showing how artificial Intelligence (AI) is the new electricity :-

Domain	AI	Electricity
Industry	It also automated industry as AI-driven robots not only maintain the supply chain but also enhances the inspection processes.	Enabled factory automation from power machinery to the assembly lines -
Household	Now AI-powered assistants control household devices and optimize energy usage through the smart appliances.	From lighting to assisting daily life chores through electric appliances, it assisted daily life -
Education	It has revolutionized the pre-existing technologies and took them one step ahead with AI-driven tools such as language translation tools and online learning platforms	Expanded access to the education technology such as computer and digitised the learning environment.
Governance	It helps in smooth public service delivery, from online complaint portals to predictive policing, it is ubiquitous -	From supporting public utilities to supplying power to the government offices, it became inevitable part of governance.

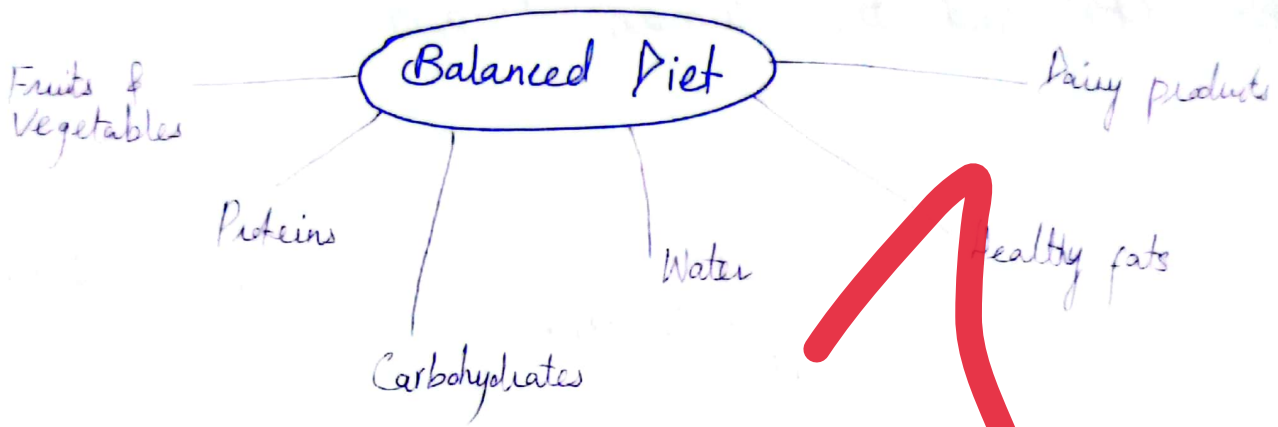
6) CPU and the Human Brain

CPU resembles the Human brain functioning in the following aspects:

Aspect	CPU (Central Processing Unit)	Human Brain
Function	Processes data and instructions of computer	Processes information and controls body functions
Processing Speed	Nanoseconds	Milliseconds to seconds
Parallel Processing	Multiple tasks performed simultaneously	Inputs and Outputs concurrently
Memory	Stores and executes ^{accesses} data in RAM	Stores and retrieves data in neural connections
Learning	Programmed and learned from data	Learns, adapts, forms new neural connections
Energy efficiency	Low power consumption for operation	Energy consumption based upon the activity.

7) Balanced diet & Vitamin deficiency disorders

A balanced diet, as the name suggests, is an intake that refers to eating food which maintains health and prevents nutritional deficiencies and excesses.



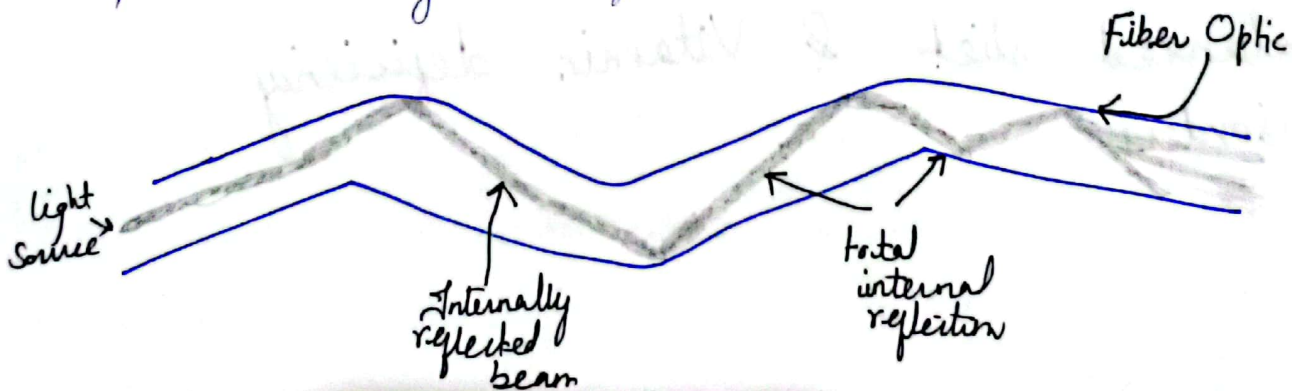
Vitamin

Deficiency Effects

- | | |
|---|--|
| A | <ul style="list-style-type: none"> - Night blindness / Vision Problems - Weak Immune System |
| B | <ul style="list-style-type: none"> - Anaemia - Neurological disorders - Skin & digestive problems |
| C | <ul style="list-style-type: none"> - Oral Problems - Weak Immune system (impaired wound healing, Scurvy) |

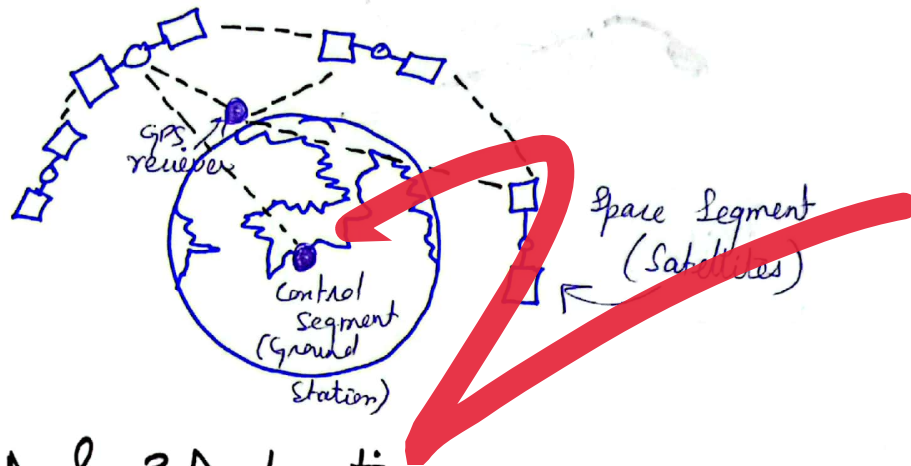
d) Working of Optical Fibres:

Photons travel across the Optical fiber through the perpetual bouncing ~~are~~ of the cable walls as shown in:



Global Positioning System (GPS)

It is a technology which provides location and time information anywhere on earth where there is an unobstructed path of light. Its working is demonstrated below:-



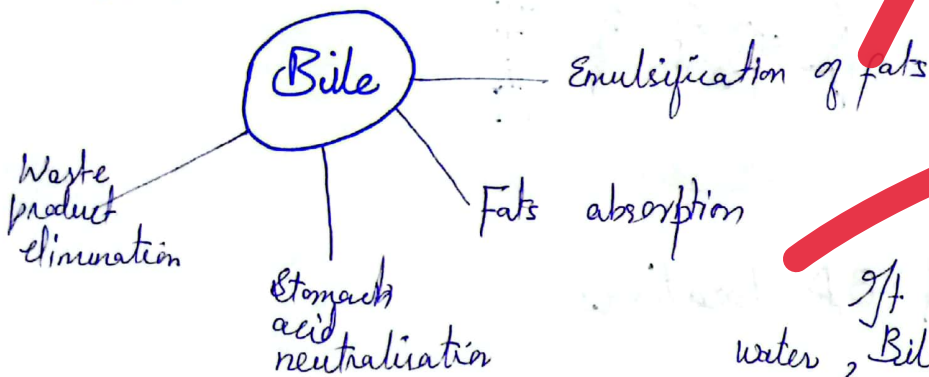
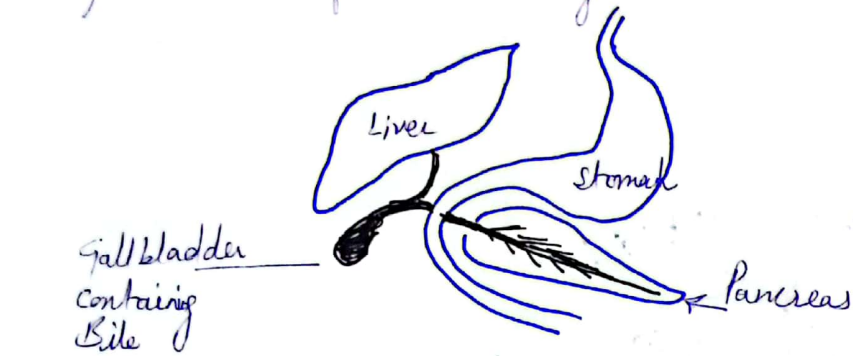
Measuring 2D & 3D locations

Through the process of trilateration, a 2-dimensional position comprising of ~~Latitude~~ and Longitude are determined by GPS. GPS receiver needs the coverage of the object by atleast three satellites, it then measures the distance between the body/object and the satellite and their point of intersection determines the 2D location of something on earth. Whereas, for the 3-dimensional location determination where altitude adds into the preexisting dimensions, GPS needs coverage by atleast four satellites. The process of trilateration besides altitude above sea level gives the 3rd dimension of an object's location.

Question 4

a) Bile

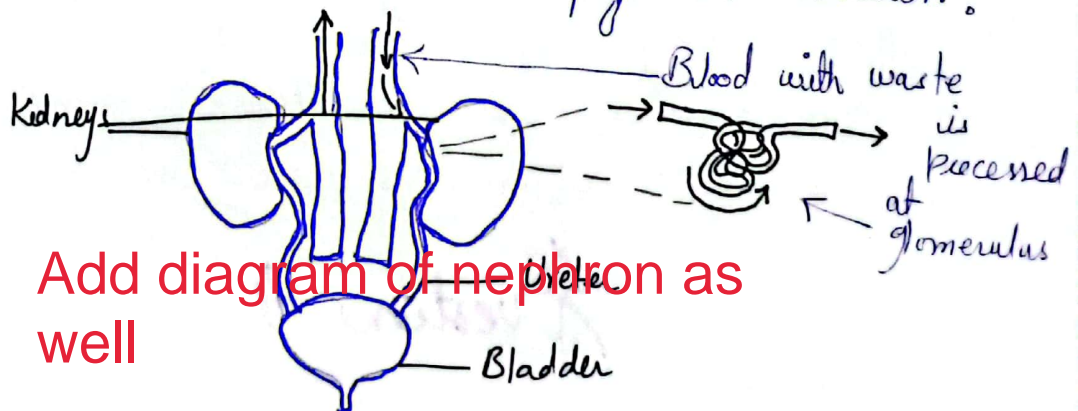
Bile is a digestive fluid produced by liver and stored in gallbladder before releasing into the small intestine -



It is composed of water, Bile salts, bilirubin, cholesterol and electrolytes that help in digestion -

b) Kidney's role in excretion

Kidneys play a key role in maintaining homeostasis of the body through regulating electrolyte balance, blood pressure and removing waste products from the blood stream - Here are the roles it plays in excretion:



Add diagram of nephron as well

Kidney's role in excretion

Hormone Production like erythropoietin and renin

Filteration to remove waste products from blood

Detoxification of drugs and related substances

Absorption of nutrients and added to the bloodstream

Homeostasis through acid-base, ion regulation

Secretion of ions to be secreted as an additional waste product

c) Methods of Solid Waste Management

It can be managed through various methods such as:-

- i) Source reduction and ~~design~~ as less packaging, reusable products, efficient manufacturing process.
- ii) Recycling & reuse - Repurposing materials conserves natural resources, reduces energy consumption and decreases landfill waste
- iii) Composting - ^{Biological} decomposition of organic waste that add nutrients back to the soil such as food scraps and trimmings.
- iv) Landfilling - Nonreusable waste is buried in landfills
- v) Incineration and Waste to energy ~~gasification~~ ^{gasification} processes.
- vi) Bioremediation - Microorganisms breakdown waste through aerobic and anaerobic digestion
- vii) Pyrolysis & Gasification - Thermal gases converting waste into valuable gases such as biochar, liquid fuels.

Explain properly

d) Define terms:

i) **Anaemia**

Insufficient red blood cells

Symptoms: fatigue, weakness, shortness of breath

Causes: Iron deficiency, vit B12 deficiency, genetic disorder

Treated with supplements & causes

Diagnosed through Blood test

ii) **Appendicitis**

Appendix Inflammation

Symptoms include the abdominal pain, vomit, fever

Caused by blockage of appendix lumen or infection

Treatment includes appendectomy or antibiotics

Diagnosed through Imaging, blood test

iii) **Spleen**

filters blood, removes damaged cells and stores platelets

Reservoir of immune cells

Located in upper left abdomen

Diseases include

Splenomegaly and Splenic rupture

iv) **Isotones**

Same number of neutrons but different number of protons in atomic nuclei

Used in classification scheme

For example, Carbon -12, Nitrogen-13, Oxygen -14

This is an academic way of presenting information

v) **Mypia**

Corrective surgery and glasses

Vision problem where distant objects appear blurry

Caused when eyeball too long or cornea too curved

Diagnosed by eye exam