

Increase length

Add headings

Draw new diagrams

Work on math portion

1/1/20

## Part II Sec I

Q No # 4

(a)

### Introduction:

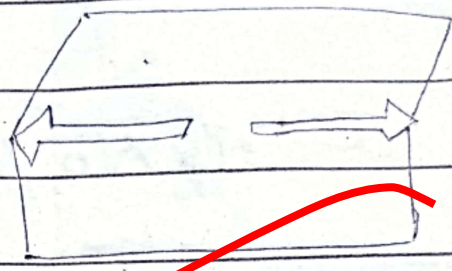
Earthquakes are means the movement of the earth crust. The earth moves suddenly and creates a lot of destruction. It is measured through richter scale. The largest destruction of the earth crust in Chile.

### Causes of earthquake:

The main cause of the earthquake is the internal movement of the earth's. Sometime it occurs due to the movement of the tectonic plates of the earth. It may occur due to the divergence and convergence of plate boundaries. For example the earthquake in turkey due to the movement of tectonic plates.



Divergence



Convergence.

### Tectonic plate movement-

### Anthropogenic activities.

It may occur due to various anthropogenic activities like the earth crust may shake due to various kinds of industrial activities and blast etc. But these activities are generate earthquake at very low magnitude. It does not prove fatal for human beings.

### Difference between Tsunami and Earthquake.

Tsunami means the movement of large amount of water from one place to another place due to the movement of oceanic crust. It may be called the earthquake

in the ocean. It may captures the whole city near the coastal areas. The while the earthquake occur at land area. and it does not

The earthquake cannot be predicted while Tsunami can be predicted when one triff of the waves strikes on the coast the ~~veri~~ equipments alert the coastal areas inhabitants. they may save themselves during the striking of next triff on the coastal areas. Nowadays, the scientist predict the earthquake but mostly it may unpredictable. The destruction of Tsunami confines only at coastal areas. whereas the earthquake occur at any part of crust.

Q # C

Solar eclipse

Lunar

Eclipse

Solar eclipse may occur when the earth due to the movement occurs between the of moon. When moon moon and the sun

occurs between the sun and earth and blocks the light of the sun.

It occurs at day time. This phenomena occur ~~at night~~ every 18 months of the

The earth passes through various phase when the moon casts its shadow on the space it passes through Umbra and penumbra region.

It occurs for few minute

→ When a man sees the solar eclipse without wearing the protective eye cover it effects on the eyes.

Dimond ring effects and

and the <sup>blocks</sup> and <sup>reaches</sup> the sunlight reaches to the moon.

This phenomena occur at night time during full moon

The moon also passes the Umbra and penumbra region when it casts its shadow in the space.

It may occur for a long time

A man can see without wearing protective eye cover.

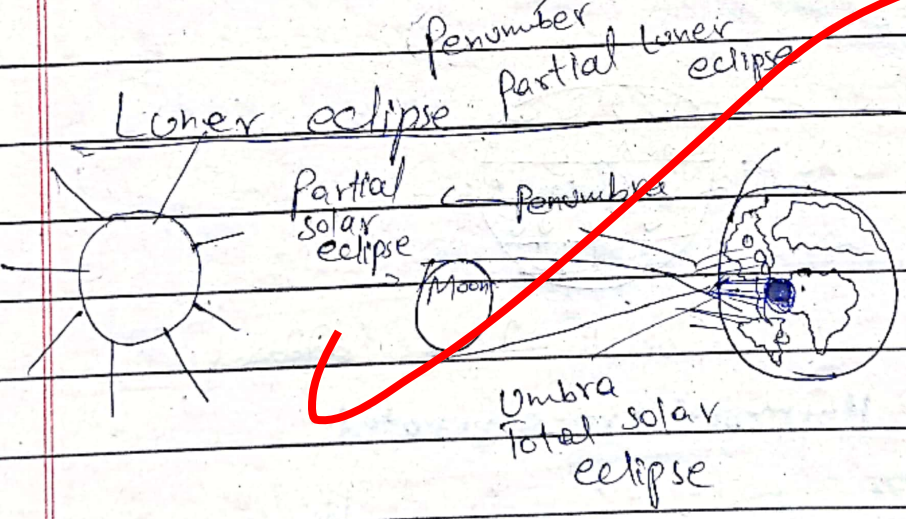
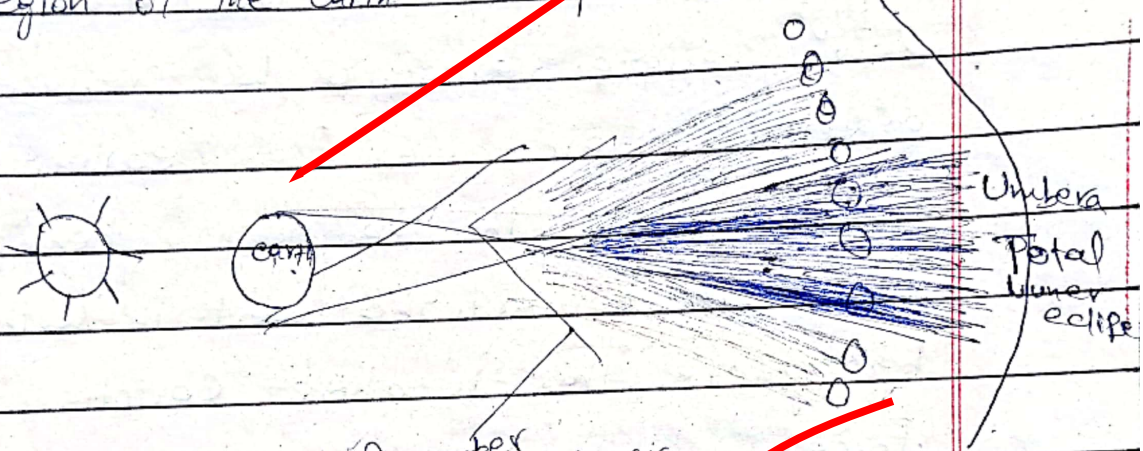
Red moon is

Belly beads are the phenomenon occur during solar eclipse

Phenomena which occur during lunar eclipse.

It occurs at a small region of the earth

It covers large part of the earth



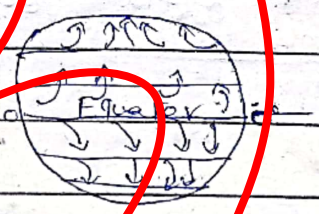
Solar eclipse.

(b)

b

Coriolis force:

Due to the difference between the land and sea temperature the air moves from <sup>High</sup> pressure area to low pressure area. The air moves from eastern side or right in the northern hemisphere and moves toward the west in southern hemisphere. This is called Coriolis Force.



Coriolis force effect.

How Hurricanes are generated

Hurricanes are generated due to the temperature difference between land and sea in North America. The sea has greater low temperature. Whereas the earth has high temperature. Due to the difference of temperature between Atlantic ocean

ocean  
moves  
America  
to up  
air  
then  
are  
at

e

direct  
of v  
and  
How

meas

Why

is  
it  
of  
bo

ocean and North America. The air moves from the ocean areas to North America. Then the warm air raises to upward and the cold and dense air takes the place of warm air then calm area generate and Hurricane are formed. These occur mostly at USA.

Q#2

e

A balance diet is a kind of diet which contains the proper quality of vitamins, fats, proteins, carbohydrates and minerals and calo

How we can measure?

Balance diet can be measured in the form of calories.

Why balance diet is necessary:-

Balance diet is very necessary for health because it contains proper portion of all kind of nutrients which requires to the body

Requirement of calories:

Each person does not do the same proportion of work. Every person works differently from other. The requirement of calories may require according to age and gender.

Human being	Calories
Children	800-1000 Calories
Women who do not work	1000-1500-2000
Women who work	1500-2000
Men who do not work	2000-2500
Men who work	2500-3000

Diseases due to the absence of Balance diet:-

@ Less nutrient's consequent:

If a person does not take proper balance diet which his body needs. He may suffer from rickets, osteomalacia etc. He cannot do his work properly.



(b) After taking more nutrient:

A person who takes more nutrients which his body does not require he may suffer from Obesity, diabetes and atherosclerosis etc.

Q # b

Solid waste management means the various ways in which we can dispose our waste which are present in solid form.

(a) Firstly, we should build a kind of pit where we put our garbage.

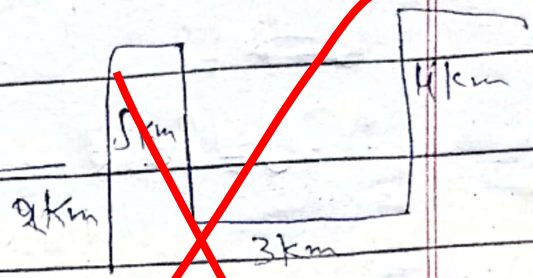
(b)

Q # d

There are three renewable energy resources under open

- (a) Hydropower plants
- (b) Wind energy plants
- (c) Solar energy power plant

Q # 8



The cow far from the initial point is = 3 km.

(b)

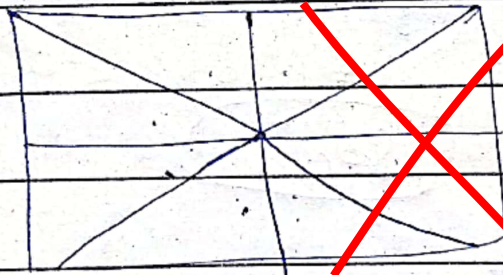
Division of Pizza into slice = 8

ratio slice = 3

Probability of picking slice with

ratio = 5

(c)



Number of triangles are = 12

Q # 7

C =

A = {a, e, i, o, u} U = {a, b, c} — 23

A'

~~W = A =~~

~~A = {a, b, c, d, e, f, g, h, i, j, k, l, m, n, o, p, q, r, s, t, u, v, w, x, y, z}~~

~~A' = {a, b, c, d, e, f, g, h, i, j, k, l, m, n, o, p, q, r, s, t, u, v, w, x, y, z}~~

Q # 6

a

Father's age (years) =  $3x$

Present age of son = 30

Present age of father = ?

$$3x = 30$$

$$3x = 30$$

$$= 30 \div 3 = 90$$

Sec 1

Q # 3

C

A star passes through various stages at the end it will turn into a kind of shape it may turn into nebula or black hole attract capture him.

- Firstly the The scientists want to predict the actual formation of the black hole. but various kinds of prediction through it.

1st stage: A star has high temperature in it and its color is blue.

2nd stage: In this stage the star's color is red yellow and it has low temperature.

3rd stage. It may The star may turn into white dwarf. Ceres B is the star which turn passes through the stage of white dwarf.

4th stage: The star turns into <sup>22</sup> the star is big then it may turn into black hole but if it is smaller then it turn into a nebulae.

Q#5

Q#5

AI revolutionizes the world through various ways. It takes the machines take the place of human beings. The human beings now do