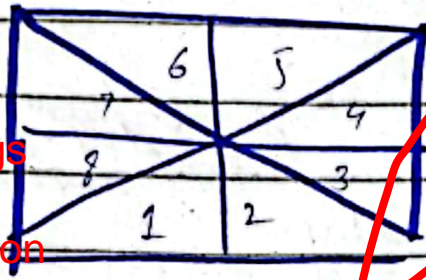


# Section - II

Q#08 (c)

Insufficient length  
Insufficient headings  
Draw diagrams  
Work on math portion

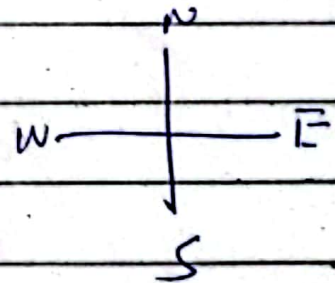
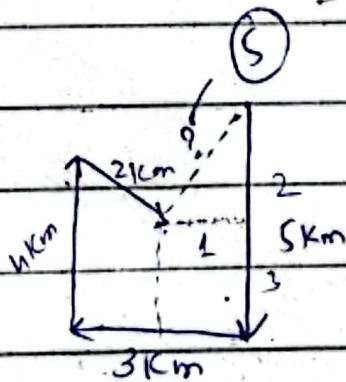


$$\text{No. of diagonal} = 2$$

$$\text{No. of triangles} = 8$$

$$\begin{aligned} \text{Total no. of triangles} &= 8 \times 2 \\ &= 16 \text{ Ans.} \end{aligned}$$

Q#8 (a)  
Crow travel



$$\begin{aligned} h^2 &= b^2 + p^2 \\ &= 1^2 + (2)^2 \end{aligned}$$

$$h^2 = 1 + 4$$

$$h^2 = 5$$

$$h = 5$$

Q# 8 (d)

IQ factors

1. Introduction

IQ stands for Intelligent Quotient and it determines persons reasoning ability.

2. Factors on which IQ depends

- Genetics
- Nutrition
- Social status
- Environment

Q# 8

(b)

No. of total slices = 8

Slices contain raisin = 3

$$P(R) = \frac{3}{8}$$

Q#6

(c)

i) 2, 6, 18, 54, 162

ii) 3125, 256, 27, 4, 1

Q#6

(a)

5y ago age of father is

was thrice the age of son. of  
son is 30y. Current age of father.

S  
 $(x-5)$

F  
 $3x$

$$(x-5) = (3x-5)$$

$$x = 30$$

$$30 - 5 =$$

$$x - 5 = 30$$

$$x = 30 - 5 = 25$$

$$3(25) = 75$$

$$\frac{25}{3} = 75$$

Now.

$$3(30)$$

$$90$$

0  
 $75$

$$3(30)$$

Q#6

b Mean of 10, 30, y, 50  
is 50 y?

$$\text{Mean} = \frac{\sum x}{n}$$

$$50 = \frac{10 + 30 + y + 50}{4}$$

$$50 = \frac{90 + y}{4} = 50 \times 4 = 90 + y$$

$$= 200 - 90 = y$$

$$\boxed{y = 110}$$

Q#6  
d)

Product of two numbers is 320  
and ratio is 1:5

Difference b/w the squares of  
these two numbers.

$$\text{Ratio} = 1:5$$

$$N \times 5N = 320 \quad \text{--- eq (1)}$$

$$5N^2 = 320$$

$$N^2 = \frac{320}{5}$$

$$N^2 = 64$$

$$N = 8$$

~~$$8 \times 5(8) =$$~~

~~$$N = 8$$~~

~~$$5N = 40$$~~

Difference of their squares

~~$$40^2 - 8^2 = (1600 - 64)$$~~

Part II  
Section-I

Q# 02 (C)

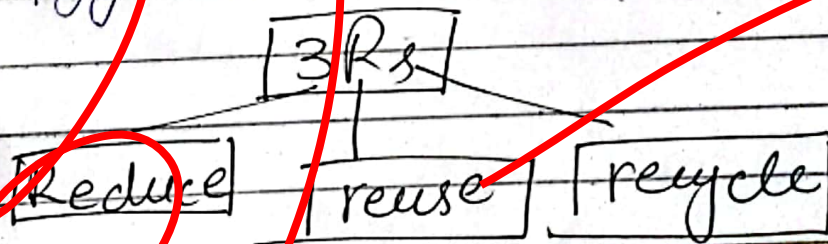
Solid Waste Management

1. Introduction

It is a system by which solid waste is managed to protect the environment from harmful constituents of waste.

2. Waste management strategy

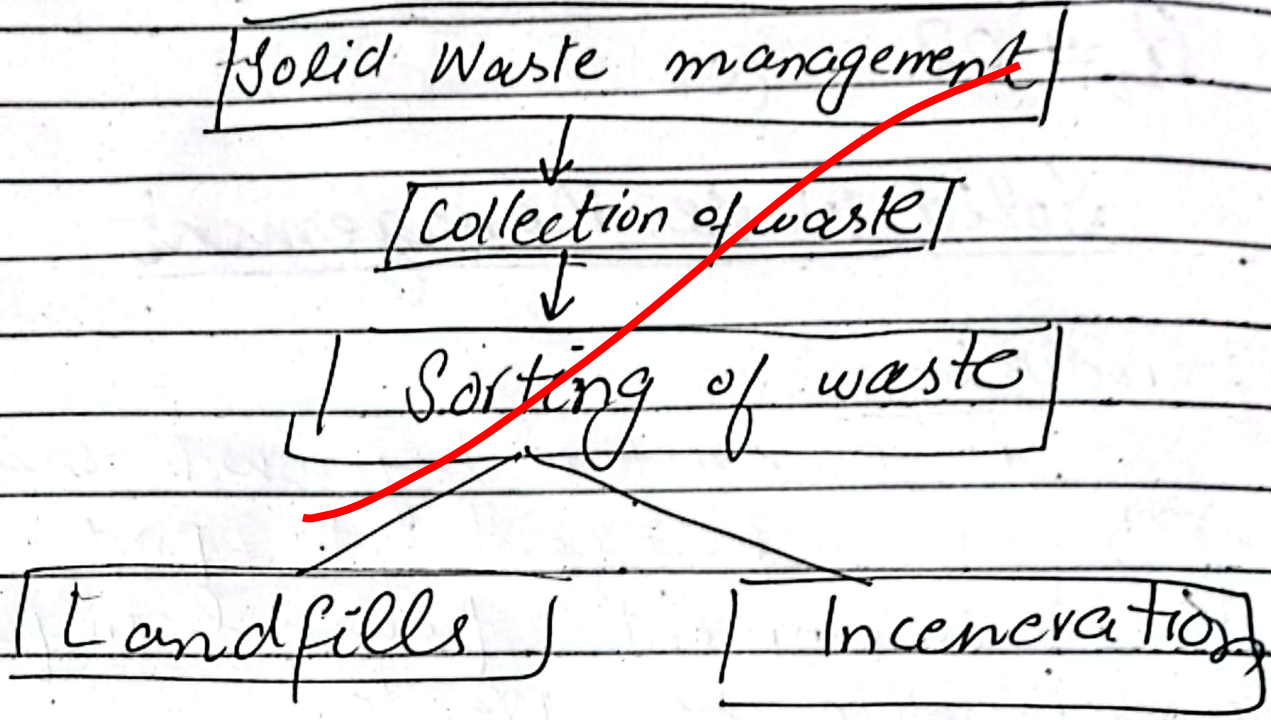
Before waste management it should be noted that 3R strategy should be used.



3. Process of waste management

The process of waste management starts from right point of generation of waste after their

collection of waste - sorting  
and then removed.



Q #02

d ~~Non~~ renewable energy resources of CPEC

## 1. Introduction

### 1.1 Renewable energy

Renewable energy is the form of energy that does not harm environment and its is not going to be exhausted.

eg: Solar energy wind energy

## 2. Renewable energy resources of CPEC

### 2.1 Quaid-e-Azam Solar Park

This is the largest solar facility of Pakistan and it is established at Bahawalpur, Pakistan.

2.1.1 Capacity of electric production  
it has the capacity of 1000 MW.

### 2.2 Dawood wind farm

Established at Jhimpir Sindh with capacity of 100 MW.

## 2.3 Sachal Windi Farm

Established at Thimpu's Sindh  
with the capacity of 50 MW.

Q #02 (c)

## Balanced Diet

### 1. Definition

Balanced diet is the diet that contain all essential ingredients that are required for healthy growth of an individual also required for wellbeing.

### 2. Constituents of Balanced Diet

#### 2.1 Macromolecules

- Proteins
- Carbohydrats
- Fats
- Vitamins

#### 2.2 Micro molecules

Water.

Minerals.



Q#06

(a)

COP 28

## 1. Introduction

COP 28 is conference of party 28 that took place at Dubai between 30 Nov to 15 Dec 2023.

## 2. Key features of COP 28

### 2.1 Loss and damage fund

Finally loss and damage fund was established at COP 28. The long due plight of global south. It was basically the endeavors of Pakistan at COP 27 that worked for the establishment of loss and damage fund.