

NAME:
Test

WATEHA SADAF
GSA (5)

QNO3: (a)

Introduction:

Cop 28 was held on 12 December 2023. It was held on finance cooperation in order to mitigate climate changes. Moreover it focuses on triple renewable energy resources by 2030. Similarly Cop 28 also focuses on enhancing nuclear power plants in order to reduce carbon emissions.

COP28 in comparison to COP27:

In Cop27 there was agreement on loss and damage fund for developing countries but the complete implementation of this fund was not defined. The criteria of fund decision countries was not defined. Similarly who will pay the fund it was also missing. Hence Cop27 was not given details of "loss and damage fund". In Cop28 countries were focused on climate finance as well as on "loss and damage fund". Cop28 has given the New collective Quantified Goal (NCQG). It is focused on superseding the US100bn

commitment. Moreover in 2028
Finance cooperation with developing
countries remained top priority.

(b) Describe input and output devices
of computer briefly.

The Devices of Computer:

Computer has different
devices on the basis of it works.
There are two types of devices:

(i) Input devices

(ii) Output devices

Input devices:

Input devices used
to provide data and information
to computer for process. Following
are some input devices:

1: **Key board:**

Key board is typewrite
style which contains buttons or
keys to act as mechanical lever
or electronic switch.

2:- **Mouse:**

Mouse is pointer on screen.
The user give instructions to
computer through mouse.

3: **Microphone:**

Microphone is mic
connected to computer. It converts
electrical sound to electrical

signals.
4: **Scanner:**

Scanner is a device which scans images and documents and convert it to digital image.
Output devices:

Output devices are those devices which presents the desired data or information after processing over command given to it. Following are some output devices,

1: **Monitor:**

Monitor is a screen which displays images, documents, graphics and information. The displayed information on screen is called soft copy.

2: **Speaker:**

Speaker is used to hear music, sound and voice output.

3: **Printer:**

Printer is a device which make soft copy of information, graphics and image on paper. In other words printer makes soft copy into hard copy.

C- Discuss function of cornea, pupil and retina shortly by drawing diagrams.

1- Cornea:

Cornea is the outer part of eye through which light enters into the eye.

2- Pupil:

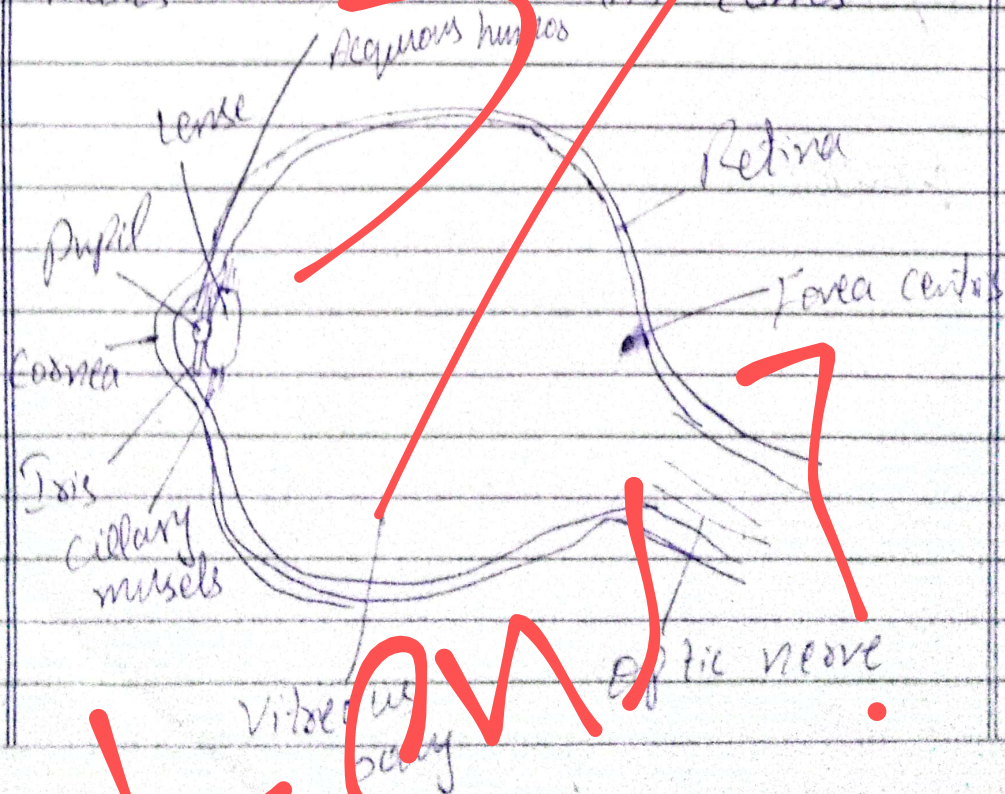
Light passes through cornea through the opening of pupil. The opening of pupil is determined by Iris. The more pupil dilates the more light enters into the eye.

3- Retina:

The back part of eye is retina. When light strikes the retina, two cells are activated.

(b) Rods

(c) cones



Rodex detect light and help in the formation of image. Similarly cones are responsible for color vision.

4. Convex Lens:

Lense in a human eye is convex lense. It allows the eye to focus on near or distant objects.

d- Discuss different causes of water pollution:

Introduction:

Water pollution is hazardous for water bodies. There is also loss of biodiversity due to water pollution. There are different causes of water pollution. However water pollution can be overcome by taking positive measures and implementing policies at national and international level.

Causes of water pollution:

Following are the some causes of water pollution

- 1- Industrial waste contaminated water. Industrial waste contains pesticides, chemical dyes and other industrial chemicals which severely pollute water.

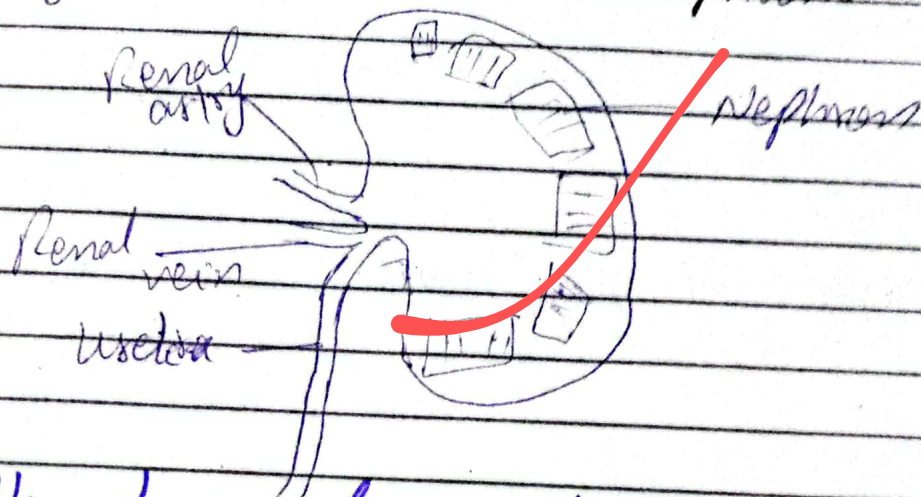
2. Plastic wastes are big cause of water pollution. According to UNEP report, 8m to 10m plastic spills each year into the ocean.
3. Plant nutrients are essential for the growth of plants but when these nutrients flow to water resources it cause serious problems for aquatic life.
4. Sediments and ~~metals~~ are also cause water pollution.
5. Bacteria, viruses and protozoa and other microorganisms contaminate water.
6. Household wastes, when not properly disposed can create water pollution.

QNo5: (a) Discuss structure of kidney in excretory system.

Structure of kidney:

Kidney is important organ of human body. 20% of blood on each heart beat is provided to kidney. It provided plays important role in oxygenation of blood. Outer region of kidney is called cortex, and inner part

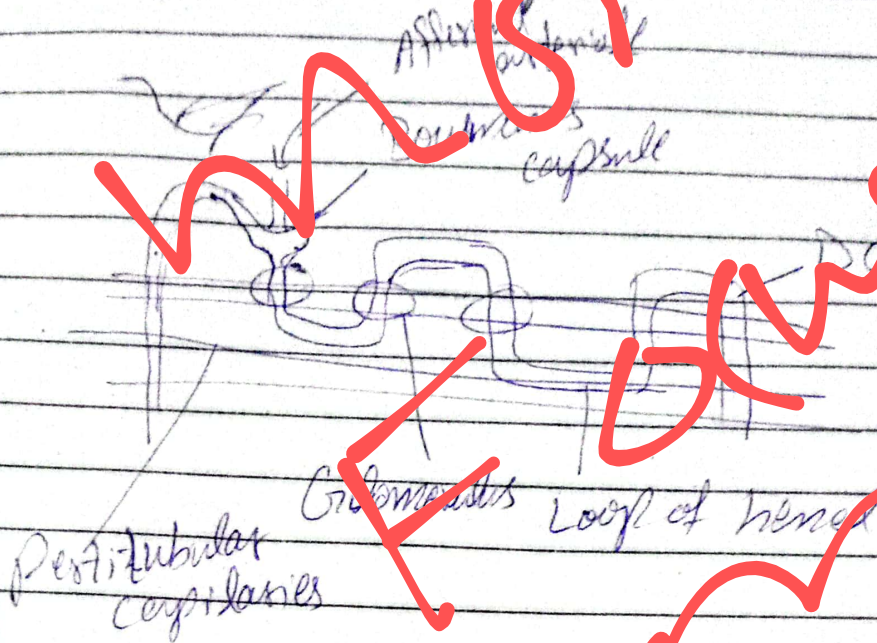
is known as medulla. The funnel like shape space into which pyramids project called pelvis. Ureters from each kidney enter into sac like structure called urinary bladder. Urinary bladder opens through urethra. Each kidney is composed of 2 million tiny U-tubes called nephrons.



Structure of Nephron:

Nephron is the structural and functional unit of kidney. There is cup shape structure present at proximal each nephron is called Bowman's capsule. When afferent artery enter into Bowman's capsule, the ball like structure glomerulus formed. The walls of glomerulus are porous. From glomerulus there arise efferent arterial which forms a network of arteries around loop of henle, PCT and DCT.

The network of capillaries is known as peritubular capillaries.



Parts of Nephrons:

Nephron has three major parts:

- (i) Loop of Henle
- (ii) Distal convoluted tubule
- (iii) Proximal convoluted tubule

b- Discuss different renewable energy sources under CPEC.

Introduction:

CPEC is economic corridor between China and Pakistan. CPEC is huge project contains railroads, energy projects, motorways, highways, special economic zones and industrial agricultural advancement. The energy projects contains both

renewable and non-renewable.
Renewable energy sources under CPEC:

CPEC consists of 14 energy projects in which 7 are based on coal and 6 are based on renewable energy sources.

1- Hydro power project under CPEC:

There is 1 hydro power project under CPEC which is completed. The 2 hydro power projects are under construction.

Following are the names of hydro power project:

- (i) Kohala hydro power project, AJK
1124 MW
- (ii) Azad Jammu hydro power project
AJK / Punjab 400 MW
- (iii) Karot Hydro power project 720 MW
- (iv) Sukkur Kinar Hydro power project
884 MW

2- Wind power projects under CPEC:

There are 4 completed project wind power projects under CPEC, and 2 are under construction. Following are the names of wind power