

Q: 3

Insufficient length
Add more headings
Draw diagrams

1 Overreliance on fossil fuels:

Developing countries are depended upon fossil fuels such as oil and gas. These countries have not transitional measure to adopt renewable energy resource.

2 Lack of infrastructure

Weak infrastructure is another hurdle in battling against global warming. Weak infrastructure poses a challenge in implementing climate resilient measures.

3 Over population

Developing nations are overly populated. It is a big hurdle to adopt climate friendly environment

4 Balancing Development

Developing countries have a challenge of balancing economic development and environmental conservation. Many developing countries prioritize development

5 Lack of awareness

Insufficient awareness about the impact of climate change is a big hindrance.

in the way of adopting climate measures

6 Unavailability of climate funds

Developed countries have not released received funds as per promised in Cop27 In 2022 many countries faced flood and hostile environment due to the high carbon emission of developed nations

b - Write a note on balanced Diet.

Balanced diet is a diet which include ^{right} amount of necessary nutrients, such as carbohydrates, protein, mineral, vitamins, fats etc, for the proper growth and functioning of the human body

Components of balanced diet.

(1) Carbohydrates:

Carbohydrate are the main source of energy. Carbohydrate provide 3.9 calories of energy per gram.

(2) Proteins:

Proteins are essential element for the growth of our body. Our body tissue

tissue and muscles are made of proteins.

Fats:

Fats are the source of energy. Fats are found in oil and dry fruits.

Vitamins:

Water and fat soluble vitamins play an important role in human body. They enhance the body's use of carbohydrates and fats.

Minerals:

Minerals are the inorganic elements that play essential role in body's normal functioning. Zinc, calcium, Magnesium and Iron are the essential minerals.

Ans. C- Machine learning, How it has revolutionized today's world?

Machine learning is the part of AI, artificial intelligence, it has revolutionized the world in many ways.

Health care:

Machine learning has revolutionized healthcare. Operations are being done with the advanced devices using 5g technology. Machine learning also are

tissue and muscles are made of proteins.

Fats:

Fats are the source of energy. Fats are found in oil and dry fruits.

Vitamins:

Water and fat soluble vitamins play an important role in human body. They enhance the body's use of carbohydrates and fats.

Minerals:

Minerals are the inorganic elements that play essential role in body's normal functioning. Zinc, calcium, Magnesium and Iron are the essential minerals.

Ans. C- Machine learning, How it has revolutionized today's world?

Machine learning is the part of AI, artificial intelligence, it has revolutionized the world in many ways.

Health care:

Machine learning has revolutionized healthcare. Operations are being done with the advanced devices using 5G technology. Machine learning also are

Autonomous vehicles

Machine learning is widely used in transportation. Such as airplane, ships and autonomous vehicles are the example of machine learning.

Advancing education:

Machine learning has revolutionized the education through online education, chat board and different apps are facilitating in education.

Climate resilience:

Machine learning is helping in climate resilience. It is beneficial in detecting seismic activities, flood and weather forecast.

Enhanced business productivity

Machine learning has enhanced the productivity of business by advanced computer technology and decision making.

RAM

- (1) Random access memory
- (2) Temporary storage
- (3) RAM is volatile
- (4) Used in the normal operation
- (5) Writing data is faster

ROM

- (1) Read only memory
- (2) Permanent storage
- (3) ROM is non volatile
- (4) Used for startup prep. process of computer
- (5) Writing data is slower.

Q-4 (a) What are the methods employed in solid waste management?

Solid waste management system refers to the systematic management of the generation, collection, transfer, treatment, recycling and disposal of solid waste.

1 Landfills:

In the method of landfill, solid waste (trash, garbage and other stuff) is buried.

Once the waste is placed in a landfill,

it is either covered with dirt or sealed

in a cell. Overtime, the organic material

decomposes and produced methane gas. This gas can be converted into electricity through gas turbine.

Recycling:

In recycling, solid waste is converted into new products to reduce the consumption of raw materials, energy and water. Recycled materials are used in packaging and building components.

Incineration:

Incineration is the burning of organic material such as paper, plastic and food to reduce its volume and mass.

It involves the burning of waste material at high temperature (up to 2200°F / 1200°C). After this, ashes are sent to landfill while the remaining heat energy can be used to produce steam.

Composting:

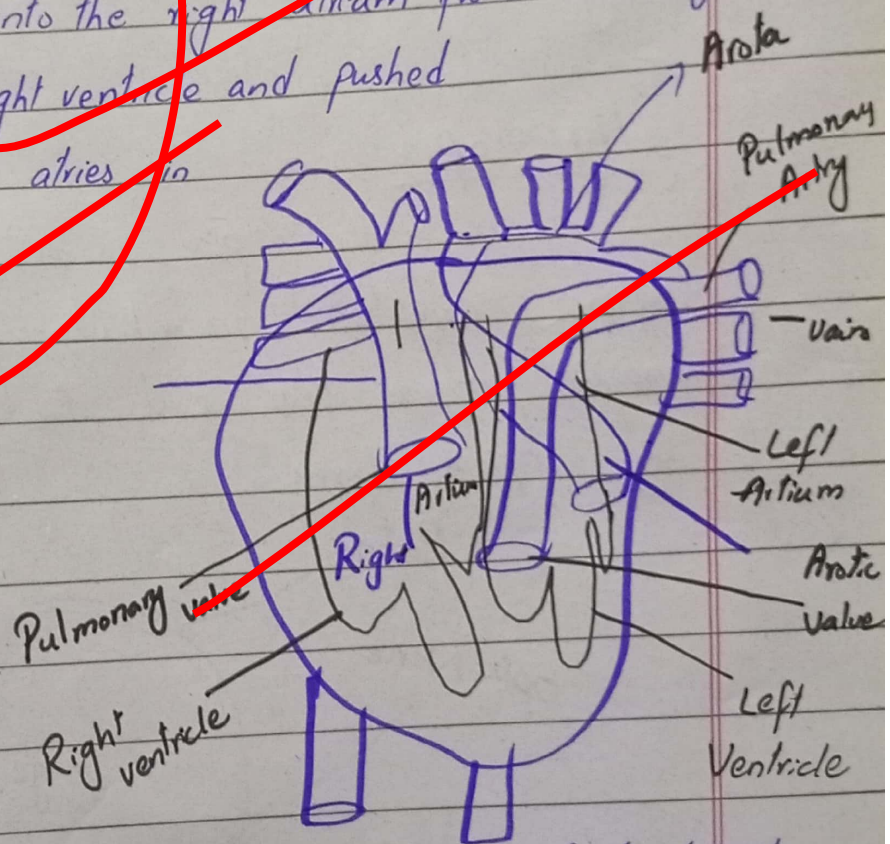
Composting is the process of breaking down organic material, such as food scraps and yard waste into a nutrient-rich soil amendment. It is a natural

and efficient way to reduce the amount of the waste. It reduce the need for chemical fertilizers and pesticides.

(b) How does a Human Heart work in blood circulation

The heart is a large muscular organ which constantly pushes oxygen-rich blood to the brain and extremities and transports oxygen poor blood from brains and to lungs to gain oxygen.

→ Blood comes into the right atrium from the body and moves into right ventricle and pushed into pulmonary arteries in lungs.



→ After picking up oxygen, the blood travels back to the heart through pulmonary veins

into the left atrium, to the left ventricle and out of the body through the aorta.

C-

What is Myopia and Hyperopia?
Enlist major part of Human Eye

Myopia:

Myopia is a common vision condition in which near object appears clear but objects further away look blurry

Hyperopia:

Hyperopia is a common vision condition in which you distant object appear clear but the object near by appear blurry.

