

(Section - I)

Qno. 4

a) Solid waste management

Solid waste management is the process of treating the municipal and industrial waste.

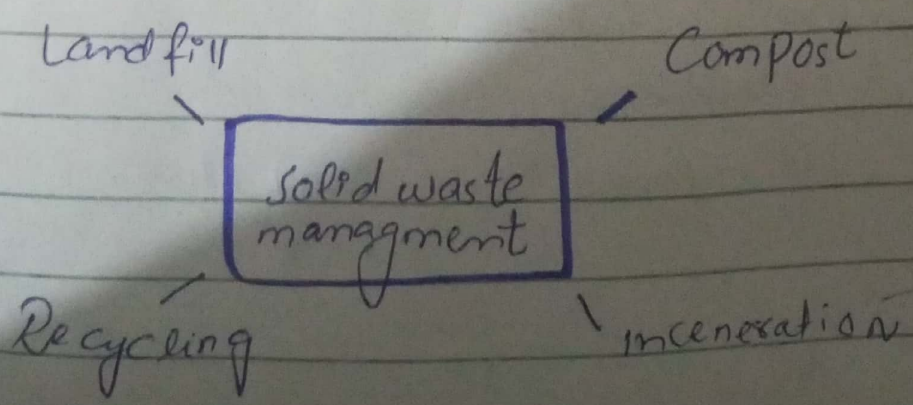
Kind of waste

- Municipal waste
- Industrial waste

→ Examples

Re-cycling of Plastic, glass etc.
re-cycling of food items etc

→ Methods



• Landfill

In this process, the solid waste buried^{or} under ground in non-residential area.

example:

management of municipal waste in non-residential areas.

• Incineration

The solid waste got treated at high temperature.

The waste treated on **1200°C** and above. Then the treated waste would re-use or re-shape.

• Re-cycling

In this method the wasted item got re-cycled

example:

Plastic recycling etc

Compost

In this method, the food items which are not in use are re-treated. By the method of **decomposition** the waste get treated and then reuse after shaping.

example,

fertilizer, pesticides

So, the solid waste management is the process that enables people to avoid mess and make productive use of it.

b) Human Heart blood circulation

The blood in human body is being **pumped** by the heart. Heart in human body is an functional organ

which is responsible for the blood circulation in the body

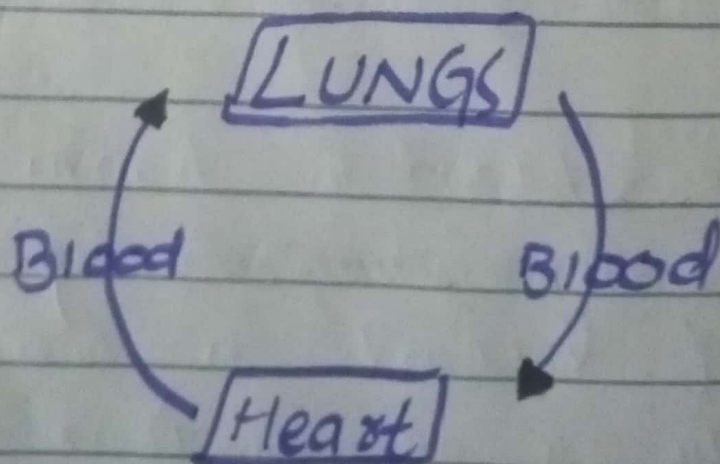
Circulated blood includes :

- 1) Oxygenated blood
- 2) de-oxygenated blood

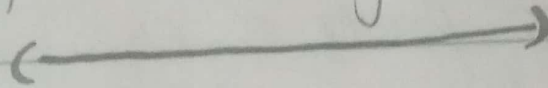
Double blood circulation System

Heart often called as the double blood circulation system.

As the blood coming from lungs comes to the left ventricle of heart and then passing through the right ventricle, it again moves in to lungs.



In a nutshell, heart pumps the blood through out the body, that keeps our body in working. According to the International health institute of Cardiology; heart is a key organ of a human body that regulates the blood to keep the body function.

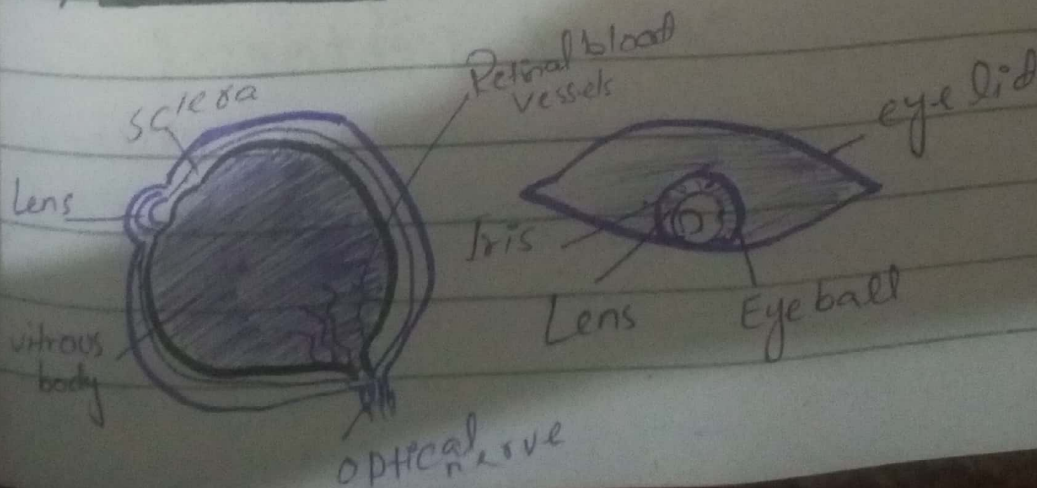


c) ANS

→ Human Eye Structure & function

Eye is an basic organ of the human body

→ Structure:



Function

- ① It regulates sensory visions to the body
- ② It enables brain to sense images. As brain donot have sense to recognize the image

→ Major parts of Eye

- Iris
- Retina
- Eye ball
- Lens
- Optical nerves
- Sclera
- Vitreous body

Myopia

Myopia is an eye disease

It is "Short-sightedness"

eye disease. In this a person is unable to see the close objects

Hypermetropia

H is also an eye disease
eg a **long-sightedness**. In
this a person is unable
to see the distance objects

Both long and short sightness
can be **Cured**.

Treatment of Myopia

H can be cured by a
balance diet. The **spactacles**
are also use for the treatment.

→ Treatment of hypermetropia

Hypermetropia is cured by
the **medical treatment** if
the patient does not get recovered.

d) write uses:

i) Microwave

- Microwaves are used in electrical appliances.
- It is used in Radio-transmission.

ii) Ultraviolet

- ultraviolet radiations are used in X-Rays.
- It is also used in Reactors (Nuclear) & in Ultrasound.

iii) X-Rays

- X-rays are used in hospital to detect bone fractures.

Page: 5
(1)

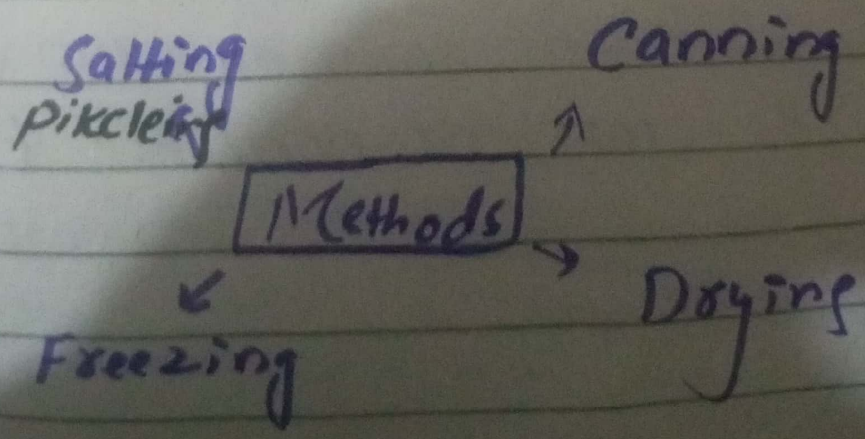
Food Preservation

Food preservation is a method of preserving food items.

Benefits

- 1) It increases the sustainability of food
- 2) It maintains the nutritional value of food for a long time
- 3) It help to keep food in stock e.g. Seasonal fruits / vegetables

Methods of food preservation



• Salting the food item (Pickling)

It is an old method of preserving food in which salt is applied on food in order to preserve food for a long time.

• Freezing

The food items especially (Meat products) are frozen in this process.

• Canning

It is the process in which the food items are put into the jars or canisters to prevent food from contamination.

Drying

It is the process in which the food items get dried to preserve for long time including fruits or meat etc.

example: peach, grapes etc.

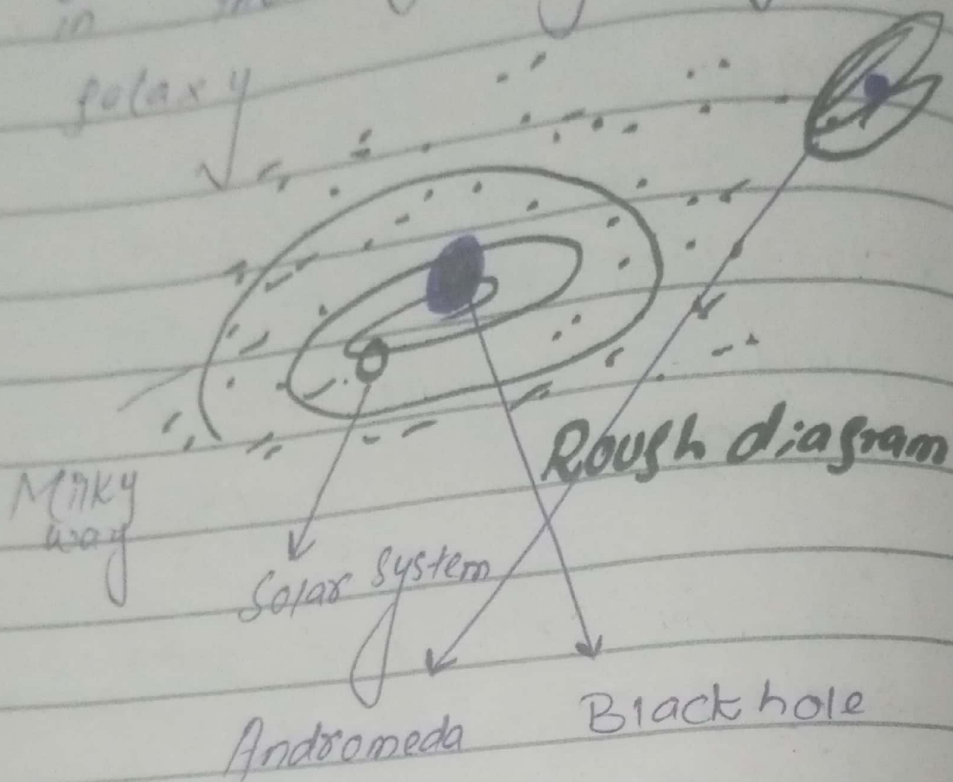
In a nutshell, food items can be preserved for a long duration through the preservation methods.

b) Milky way

Milky way is an "spiral galaxy" in the space. It is located in space.

Solar system

Our Solar system is located
in the Milky way
galaxy

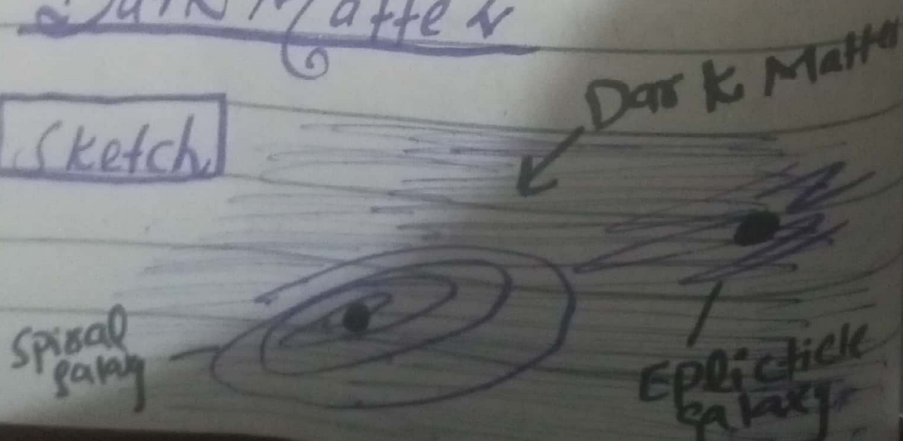


Nearest galaxy to Milky way

'Andromeda' is the
nearest galaxy to the
milky way

Dark Matter

Sketch



The empty space in the universe \sim in is called as the "dark matter" as per scientist's information.

It contains the strong gravitational pull.

Parts of galaxies

It includes:

- Planets
- Stars
- dark matter
- Black hole
- Dwarf Planets
- Nebula
- anti-dark matter
- Comet & asteroids

c) Solar Eclipses

Lunar Eclipses

Defination

It occurs when moon obstructs the sunlight coming to the earth

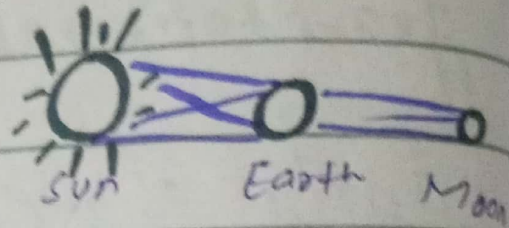
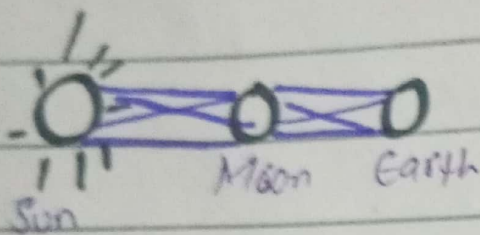
Occurs when earth obstruct light of moon coming from sun

Duration

It occurs for
5-7 minutes
maximum

It happens
for 7 hours
approx.

Diagram



d). Nuclear Fission

Nuclear reaction based
on "Uranium" in order to
produce energy.

Nuclear Fusion

Nuclear fusion reaction
is for the purpose of
producing energy in mass
amount.

In this process different atoms of nuclei react to form an element.

Both of the reaction are carried out to produce the "massive energy".

(Section - II)

Q no 8, Ans

a) find out correct word

i) THRSI

ii) GNDERA

TRISH

GENDAR

iii) HIODALY

iv) SCHAMOT

HOLIDAY

v) ONLNDO

Q

b) find the missing no:

4) 4, 16, 36, 64, ?, 244

7.

ii) 30, 29, 27, ?, 20, 15

23

iii) 1, 7, 15, 25, ?, 51

37

iv) 0, 2, 6, 12, 20, 30, ?

42

v) 48, 24, 72, 35, 108, ?

84