

## Section-1

### General Instructions

Q No 4

1. Give numbering to headings
2. Do not write lengthy paragraphs. Write medium sized paragraphs with headings.
3. Do not use table for comparison and contrast questions.
4. Draw figures/diagram/flowchart where needed.
5. Start new question from fresh page.
6. Write unit of the answer.
7. Explain mathematical steps and the reasoning for better score.
8. Change colour scheme for references to give them more visibility.
9. Manage time well.
10. Wide page borders are discouraged. Should be reasonable.
11. Avoid writing wrong references.
12. Give more weightage to expressedly asked part/s of the question.



## 2. Chemicals pollutes the land

Chemicals are used in different ways which are mixing with land and the fertility of land decreased. Nuclear weapons also pollute the land due to coming of hazardous gases after explosions. Suppose, humans use Chinese and other chemicals for the great number of crop in a few months. These chemicals affects the land majestly. Therefore, over use of chemicals pollute land in the world.

## 3. Deforestation

It is the process in which ~~people~~ cutting of trees. People cut the trees. Deforestation reduced the oxygen and CO<sub>2</sub> increased. In this way land pollution occurs due to shortage of oxygen in the environment.

## 4. Mismanagement of Garbage.

Garbage is not managed majestly in developing states. States allow people to through garbage near the seas and populated areas. This garbage became harmful for the land and keep it less fertile. Hence, mismanagement of garbage causes land pollution.



Q No: 4

## b. Goals of COP-27

COP-27 summit held in Egypt in 2022, in which world's leaders discussed on major goals to stabilize greenhouse gas concentration at a lower level to reduce threat of climate change. It was decided to mitigate global warming upto  $2^{\circ}$  (~~centigrade~~ degree celsius). States donated for the better climate change. In short, COP-27 was for the decrease of rising temperature and create favourable climate change for the world.

### 1. Stabilize Green House Concentration

COP-27, summit decided to reduce greenhouse gases, that are disturbing the climate change badly. World's leaders cooperated to prevent anthropogenic activities that produced greenhouse gases. CO<sub>2</sub> is major threat for ozone layer which may raise temperature. Therefore, stabilization of greenhouse concentration would provide favourable climate for the world.

### 2. Cooperation with Countries to Reduce Emissions

The members of COP-27 have



gathered and decided to help other countries so that they deal with climate change and reduce emission of gases in their states. Fund was collected in which leaders aimed to reduce  $2^{\circ}$  degree celsius, temperature. This target would balance the favourable climate for the world. Thus, it is stated that in COP-27, members cooperated with states to deal climate change.

### 3. Global Transformation

COP-27 highlighted Plan to invest money for global transformation to reduce use of hydrocarbons for the economic purpose. It was decided to invest at least \$4 trillion to \$6 trillion annually to transform the globe from major hydrocarbons emission to lower the hydrocarbon emission.



QNO: 4

C GIS technology can be used in various subjects of environmental sciences that include urban planning, water waste management, disaster management and other measurements related to air pollution, water pollution and land pollution.

In short, GIS can protect environment from hazardous which is happening due to mismanagement of several things.

1.



## Section II

Q No 6

a. Identify the series

i) 10, 100, 200, 310, ~~600~~

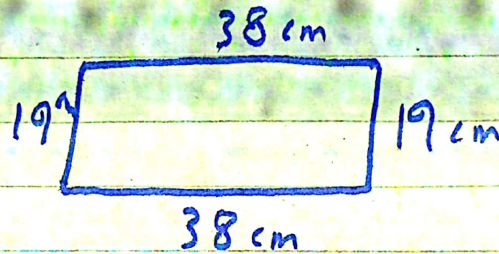
$$10 + 100 + 200 = 310 + 310 = 620$$

Reason?

ii) 3, 7, 23, 95, ~~479~~

Q No 6

b. Perimeter is 114 cm



$$A = L \times W$$

$$A = 19 \times 38 = \del{632} 722$$

$$A = \del{632}$$

$$A = 19$$

$$\begin{array}{r} \times 38 \\ 152 \\ \hline 572 \\ \hline 722 \end{array}$$

$$A = 722$$



Q No 7  
a

$$\% = \frac{\text{Given}}{\text{Total}} \times 100$$

$$20 = \frac{?}{80} \times 100$$

$$x = \frac{100 \times 20}{80} = 25$$

55 was the original price of the shirt

Q No; 7  
b

Code Brother = ~~BOB5@A~~

Code = Sister = BOB5@A

Q NO: 7

C

i

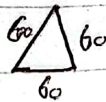
Scalene Triangle: It is a triangle in which all three sides are in different lengths and different angles.



Scalene

ii

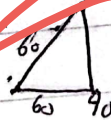
Equilateral Triangle  
It possesses equal sides of three angles and length.



Equilateral Triangle

iii Isosceles :

It possesses one right angle and two equal length and angles



Isosceles