

Q No. 2 :

## i. RAM and ROM

- RAM is random access memory.
- ROM is read only memory.
- RAM is every important to store temporary file and data that is fetched from Hard drive.
- ROM store all important data to start computer and which is permanent.
- RAM data is volatile
- ROM data is non volatile

Improve paper presentation

Enough headings

Enough length

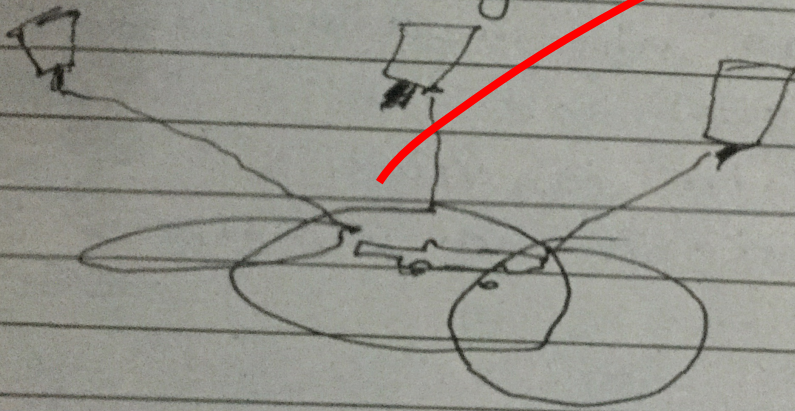
Work on math portion

## ii. Network and Internet.

- Network is connection of different and many computers in small and limited area.
- Internet is connection of computer devices to any where in the world.
- Network can have cable connection to share data through computers in one room, building or city.
- Internet net is not bounded by any area.
- Network is local area which does not require heavy technology like satellites and optic fibers.
- Internet need satellites and optic fibers.

## iii GPS &amp; GIS

GPS is Global Positioning System  
 → Geographic Information System (GIS)  
 → GPS is used to locate any thing on the earth by use of 3 satellites by finding its latitude and longitude.



GIS: It is used to represent geographic data in graphic layers to show the geography, population, buildings, street, agriculture. All data is integrated. It is used in urban or rural planning. also used by governments to make efficient planning by analyzing the data.

## iv) Byte and Nibble

- Byte is unit of memory which contains the 8 bits
- Nibble is half of Byte so it contains 4 bits of memory.
- Byte is standard form of computer memory representation
- Nibble is basic memory unit used by computer scientists.

- v- Natural satellite and Artificial satellite
- Natural satellites are also called moons. Natural satellite revolves around the any planet made by natural celestial body mass.
  - Artificial satellite are made by human and launched to revolve around the earth by mitigating natural satellite.
  - Natural satellites is source of light in the night
  - Artificial satellites are responsible for sending and receiving signal from earth. which are helpful in radio communication, internet broadcasting, GPS and many more.

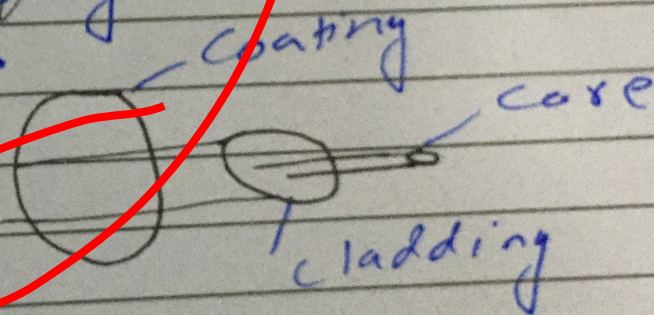
b) Write a note on optical fibres

Optical fibers are used to transmit data through method of total internal reflection. It is used by internet providers for fast transmission than copper or other wires.

Optical fiber is made of 3 parts

- i) core
- ii) ~~shielding~~ cladding
- iii) coating

Core actually has data in form of light



Day: \_\_\_\_\_

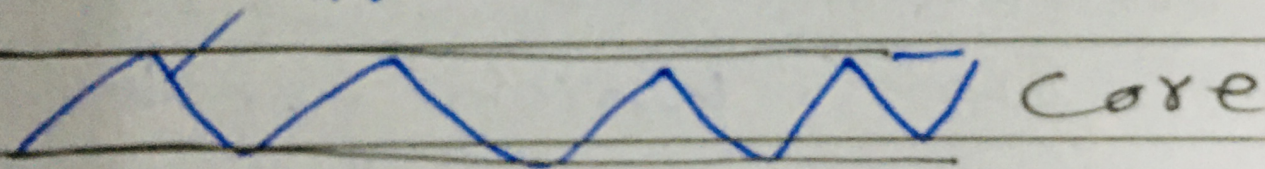
Date: \_\_\_\_\_

→ Optical fibers is used to transmit data over longer distance as over internet wires through seas connected by optical fibers.

→ Optical fibers use repeaters as for longer period light signal start becoming weak so repeaters are making replicate same signal.

→ core and cladding has different density. Core is more dense so to not transmit light out of core.

transmission method.



b)

Q N.04:

a) COP = Conference of Parties  
 Its a platform where all countries from world - developed and developing join together to control climate change by cutting carbon emission.

And many actions are taken to reduce carbon foot print by plantation and shifting towards green energy.

Comparing COP-26 and COP-27

→ Every five year evaluation of countries made pledges to reduce carbon foot prints, submit funds if developed ~~world~~ country and other projects.

COP26 - China pledged to initiate cuts by 2030 (35% of carbon emissions).

COP27 - Countries agreed to reduce the world temperature by 1.5 degree celcius till 250 by cutting carbon emissions and to meet 2030 target.

COP26 and COP27 - Challenge.  
 Countries observed that there is increase in frequent wild fires which is causing further deforestations.  
 Already countries are not meeting target of carbon emission cuts.  
 So, they decided to protect

forests by reducing earth temperature  
Target set to plant more trees

Important points of COP-26 - Glasgow  
United States the world leader step  
down from COP21 agreement to  
reduce carbon emission by halting  
or reducing coal, oil and gas  
industry. It further step down  
from target of stopping oil and  
gas automobiles. Done by Donald  
Trump to promote his local industry.

→ World missed its target to  
carbon emission

→ Not a single multi-national  
company met the target.

COP27 - 2022 Sharmul Sheikh Egypt

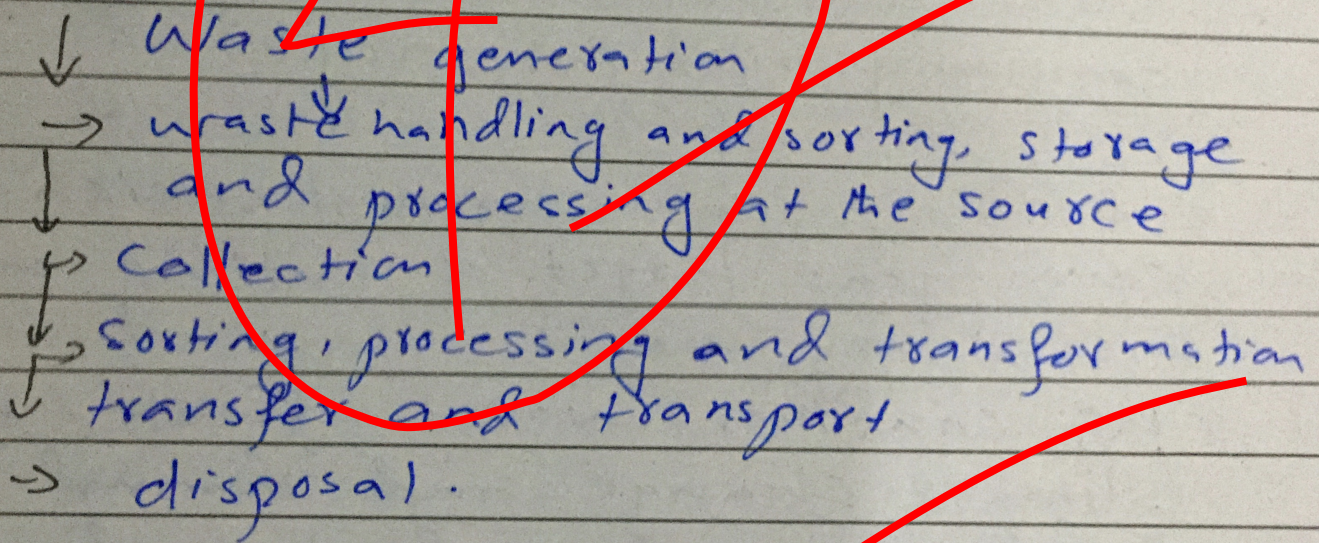
→ seven year target of cutting emission  
missed by world

→ US countries worst affected by  
climate change and demand for  
fund allocations for the damages.

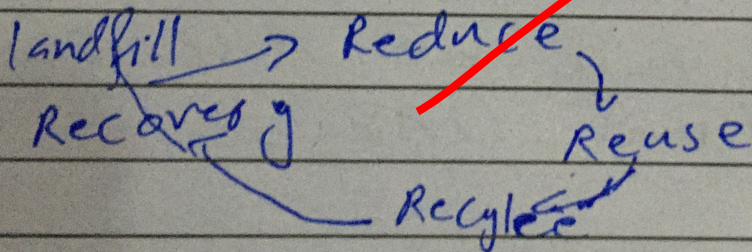
— community is established and further  
fund allocation procedure and  
collection will be discussed in  
COP-28 dubai - UAE.

b. Solid Waste Management.

Solid waste contributes in environmental pollution. Solid waste is big problem which is generated is vast majority in daily basis - hospital, restaurants, industries, military, nuclear technology, electronics, household and many places. Plastic has been major problem due to disposal of things. Solid waste management is method to treat waste in such way that it must be reused or reduce its negative affect or dispose it completely.



The most favoured option



Land fill: In 1935 a new system was arrived in California that is known as sanitary land filling method.

Sanitary landfills: Sanitary landfill accept hazardous wastes such as hospital waste. Sanitary landfill use technology to contain the waste and prevent the leaching out of potentially hazardous substances.

- Municipal solid waste landfills that accept household waste as well as other wastes.

- Construction and demolition of waste landfills

- Industrial waste landfills waste coming from industry should be treated in process

↓ location of ground must away from residential area about 500 meters

↳ 20 meters away from commercial areas

↳ location of ground water must be 3 meters minimum soil layer.

Waste management: It is very important to increase efficient methods for waste management by new research and using technology. Because oceans, ground water and land is becoming mount of wastes.



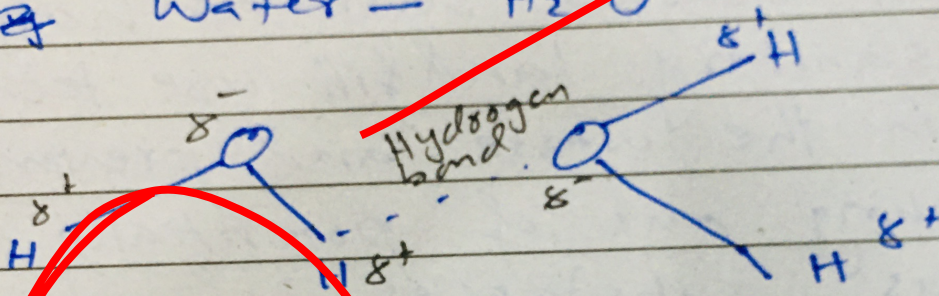
Day: \_\_\_\_\_

Date: \_\_\_\_\_

d. Covalent bond in water

Covalent bond is by sharing the valance electron of two atoms to become the pairs to become stable.

~~H<sub>2</sub>~~ Water — H<sub>2</sub>O



Oxygen atom becomes the partial negative and it has more electronegative force to attract hydrogen atom so change its angle from normal bond of covalent.

Its bond angle is 104.5°

Day: \_\_\_\_\_

Date: \_\_\_\_\_

SECTION-B

Q 7:

a) Solution: As 7 consecutive numbers

$$20 = x + (1+x) + (2+x) + (3+x) + (4+x) + (5+x) + (6+x)$$

$$20 = \frac{7x + 21}{7}$$

140 = 7x + 21 | Taking 7 common

$$20 = x + 3$$

$$x = 17$$

As 6+x is largest number

$$6 + 17 = 23$$

c)

7, 12, 19, 28, 39, ...

5      7      9      11      13

7, 12, 19, 28, 39, 52 ans.

b)

A is cousin of C

D is cousin of A

↓  
not brother of C

so D is sister of

girl

C  
boy