

Q No 6

24

General Instructions

- as
1. Give numbering to headings
 2. Do not write lengthy paragraphs. Write medium sized paragraphs with headings.
 3. Do not use table for comparison and contrast questions.
 $y = \text{Father}$
 4. Draw figures/diagram/flowchart where needed.
 $x = \text{son}$
 5. Start new question from fresh page.
 $3x = y$ (i)
 6. Write unit of the answer in ability section.
 7. Explain mathematical steps and the reasoning for better score.
after 5 year
 8. Change colour scheme for references to give them more visibility.
 $x + 5 = 30$ (ii)
 9. Manage time well.
 10. Wide page borders are discouraged.
Should be reasonable. it for x
 11. Avoid writing wrong references.
 12. Give more weightage to expressly asked part/s of the question.
 $x = 30 - 5$

$x = 25$

put it in eq (i)

$3(25) = y$

$y = 75$

So father current age is 75

75+5

b) Tax = 10%
Tax amount = 15000
income = ?

$$\text{income} \times \text{tax} = \text{tax amount}$$

$$\text{income} \times 10\% = 15000$$

$$\text{income} = \frac{15000}{10\%}$$

$$= \frac{15000 \times 100}{100}$$

$$\boxed{\text{income} = \text{Rs } 15000}$$

c)

~~Suppose~~ let suppose

Remaining number = x

$$\frac{x}{5} = 15 \quad \text{--- (i)}$$

list of 6 numbers
 y = number that removed

$$\frac{x+y}{6} = 20 \quad \text{--- (ii)}$$

solve eq (i)

$$\boxed{x = 15 \times 5}$$
$$\boxed{x = 75}$$

put in eq 2

$$\frac{75+y}{6} = 20$$

$$75+y = 20 \times 6$$

$$75+y = 120$$

$$y = 120 - 75$$

$$\boxed{y = 45}$$

So removed number is 45

d)

i) 8, 4, 32, 7, 5, ~~14~~

ii)

17, 19, 23, 29, 31, 37

$$19 - 17 = 2$$

$$23 - 19 = 4$$

$$23 - 23 = 0$$

$$x = 23 + 6$$

$$\boxed{x = 29}$$

Reason?

Q No 8

a)

$$3 \text{ liters} = 24 \text{ sq m}$$

$$1 \text{ sq m} = \frac{3}{24} \text{ paint}$$

$$50.4 \text{ sq m} = \frac{3}{24} \times 50.4$$

Percentage?

$$50.4 \text{ sq m} = 6.3 \text{ liters Paint}$$

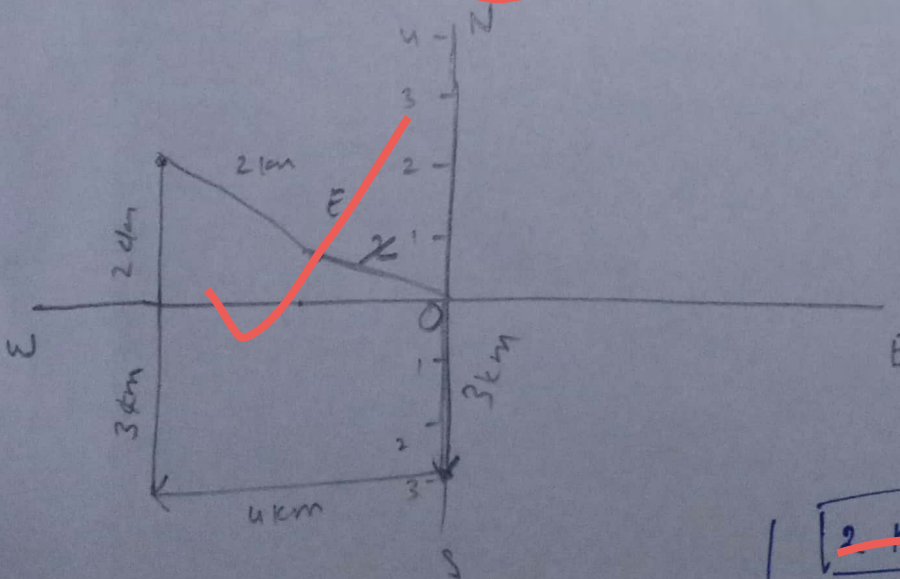
b)

$$\text{South} = 3 \text{ km}$$

$$\text{west} = 4 \text{ km}$$

$$\text{north} = 2 \text{ km}$$

$$\text{East} = 2 \text{ km}$$



$$2 \text{ km} \text{ far}$$

$$4 \text{ km} = 2 \text{ km} + 2x$$

$$4 - 2 = 2x$$
$$\frac{2}{2} = x$$
$$x = 1$$

$$\begin{aligned} \text{net property} &= 640000 - 400000 - 50000 \\ &= 595000 \end{aligned}$$

$$\begin{array}{r} 1140 \\ 45 \\ \hline 595 \end{array}$$

$$\text{mother's share} = 595000 \times \frac{1}{8}$$

$$\boxed{\text{mother's share} = 74375}$$

$$\text{daughters share} = 2 + 2 + 1$$

$$\text{Total} = 5$$

$$\text{daughter's share} = (595000 - 74375) \times \frac{1}{5}$$

$$\begin{array}{r} 74375 \\ 8 \overline{) 595000} \\ \underline{56} \\ 35 \\ \underline{32} \\ 30 \\ \underline{24} \\ 60 \\ \underline{56} \\ 40 \\ \underline{40} \\ 0 \end{array}$$

$$\begin{aligned} &14125 \\ &= \cancel{520625} \times \frac{1}{8} \end{aligned}$$

$$\boxed{\text{daughter's share} = 14125}$$

$$\text{each son's share} = \cancel{520625} \times \frac{2}{5}$$

$$\boxed{\text{each son's share} = 208250}$$

61

Tah's investment period = 12

Usman investment period = 12 - 8 = 4

Umar investment period = 12 - 5 = 7

$$\begin{aligned} \text{Total investment} &= 180,000 + 105,000 + 120,000 \\ &= 405,000 \end{aligned}$$

$$\text{Tahir investment} = 15,000 \times 12 = 180,000$$

$$\text{Umar investment} = 30,000 \times (12 - 5) = 210,000$$

$$\text{Usman investment} = 45,000 \times 4 = 180,000$$

$$\text{Total investment} = 180,000 + 210,000 + 180,000$$

$$\boxed{\text{Total investment} = 570,000}$$

$$\text{Tahir Profit} = 406000 \times \frac{6}{180000}$$

$$\frac{570000}{19}$$

$$= \frac{128210.5}{2436000}$$

$$\boxed{\text{lahr Profit} = 128210.5}$$

$$\text{Umar Profit}$$

$$= 406000 \times \frac{7}{210000}$$

$$= \frac{149578.94}{2842000}$$

$$\boxed{\text{Umar Profit} = 149578.94}$$

$$\text{Usman Profit} = 406000 \times \frac{6}{180000}$$

$$\boxed{\text{Usman Profit} = \text{Rs } 128210.5}$$

148
 x 9
 132
 14
 x 7
 132
 14
 x 4
 152
 14
 x 5
 144
 14
 x 3
 144
 14
 x 2
 38
 149578
 19 | 2842000
 149
 94
 76
 182
 171
 110
 95
 150
 133
 170
 152

Section - A

Q No 2

Use proper page. Do not use. A4 pages.

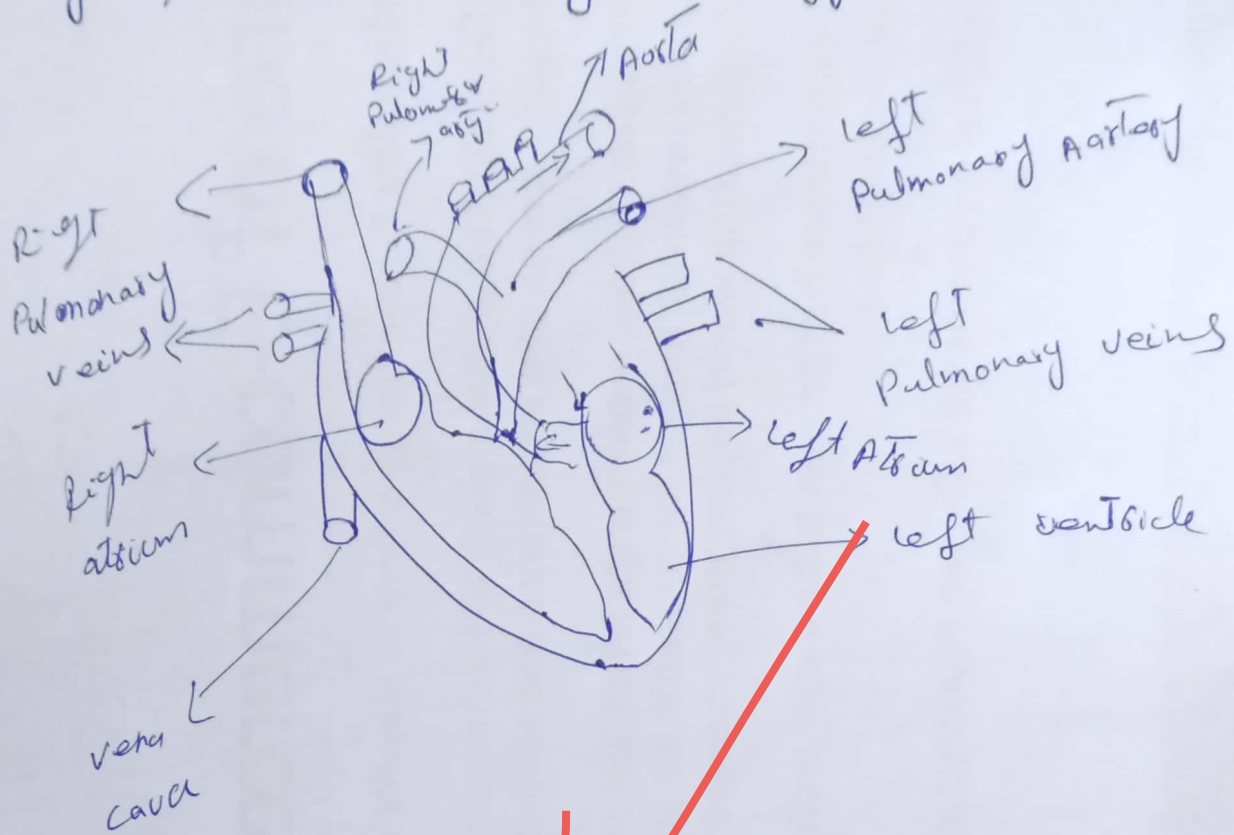
Circulatory system:-

The Blood supply system is called circulatory system which contain heart, different blood vessels and control the flow of blood.

Human Heart:-

Human Heart is a fist size organ that pumps blood through the body. ~~Every~~ Everyday The heart pumps 7600 litres of blood and beating about 0.1 m times the human heart has four chamber. The upper chamber have right and left atria and lower have chamber right and left ventricles. The lower chamber are the powerful pumping chamber. A wall of tissues separate the right and left side of heart. The right side

of the heart supply blood to the body
that is oxygenated blood and left side
of the heart carry deoxygenated blood



Human Heart

b) carbohydrates:-

carbohydrates are organic compounds composed of carbon, hydrogen and oxygen atoms.

the classification of carbohydrates are

following

- 1) Monosaccharides
- 2) Disaccharides
- 3) Polysaccharides

1) Monosaccharides are the simplest form of carbohydrates and cannot be further hydrolyzed into smaller sugars. They consist of a single sugar unit, as per their name mono, which means one.

example: glucose

Diagram? Structure?

2) Disaccharides:-

Disaccharides are formed by chemical bonding of two monosaccharide units through a process called condensation or dehydration synthesis. They can be broken down into two units through hydrolysis.

example: ~~lactose (glucose + galactose)~~

3) Polysaccharides:-

Polysaccharides are complex forms of carbohydrates, made up of multiple monosaccharide units linked together.

example: starch

C)

Water Pollution

Def:-

Definition

The water that has pollutants and is harmful to living bodies like animals, humans and aquatic life is called water pollution.

Types:-

Surface Pollution:-

This occurs when pollutants enter water bodies on the surface, such as rivers, lakes, ponds, it includes various type of contamination like industrial discharge and spills etc.

Ground water Pollution:-

It happens when pollutants seep into underground water reservoirs. This can result from improper disposal of hazardous materials.

Oil Pollution:-

oil spills from maritime

accidents and the oil spill
and coat the water surface, affecting
marine life and coastal ecosystems

Chemical Pollution:-

chemicals pollutants in the water having
pollution called chemical
health. affecting food chain, human

Cause:-

1) Agricultural Activities:-

the use of
fertilizers can wash off into rivers
and lakes, causing nutrient pollution and
harmful aquatic ecosystems.

2) Industrial Discharge:-

industrial chemicals
harmful metals, and other pollutants in industrial
wastewater released into nearby water bodies
that affect the aquatic ecosystem.