

**Q No 6**

a =

$$y = \text{Father}$$

$$x = \text{son}$$

$$3x = y \text{ ————— (i)}$$

after 5 year

$$x + 5 = 30 \text{ ————— (ii)}$$

so we solve it for  $x$

$$\begin{array}{l} x = 30 - 5 \\ \boxed{x = 25} \end{array}$$

put it in eq (i)

$$3(25) = y$$

$$\boxed{y = 75}$$

so father current age is 75

b) Tax = 10%  
Tax amount = 15000  
income = ?

$$\text{income} \times \text{tax} = \text{tax amount}$$

$$\text{income} \times 10\% = 15000$$

$$\text{income} = \frac{15000}{10\%}$$

$$= \frac{15000 \times 100}{10}$$

$$\boxed{\text{income} = 150000}$$

c)

~~Suppose~~ let suppose

Remaining number =  $x$

$$\frac{x}{5} = 15 \quad \text{--- (i)}$$

list of 6 numbers  
 $y$  = number that removed

$$\frac{x+y}{6} = 20 \quad \text{--- (ii)}$$

solve eq (i)

$$\begin{aligned} x &= 15 \times 5 \\ \boxed{x} &= 75 \end{aligned}$$

Put in eq 2

$$\frac{75+y}{6} = 20$$

$$75+y = 20 \times 6$$

$$75+y = 120$$

$$y = 120 - 75$$

$$\boxed{y = 45}$$

So removed number is 45

d)

i) 8, 4, 32, 7, 5, 14

ii)

17, 19, 23, 29, 31, 37

$$19 - 17 = 2$$

$$23 - 19 = 4$$

$$23 - 23 = 0$$

$$x = 23 + 6$$

$$\boxed{x = 29}$$



# Q No 8

a)

$$3 \text{ liters} = 24 \text{ sq m}$$

$$1 \text{ sq m} = \frac{3}{24} \text{ paint}$$

$$50.4 \text{ sq m} = \frac{3}{24} \times \frac{6.3}{8}$$

$$50.4 \text{ sq m} = 6.3 \text{ liters Paint}$$

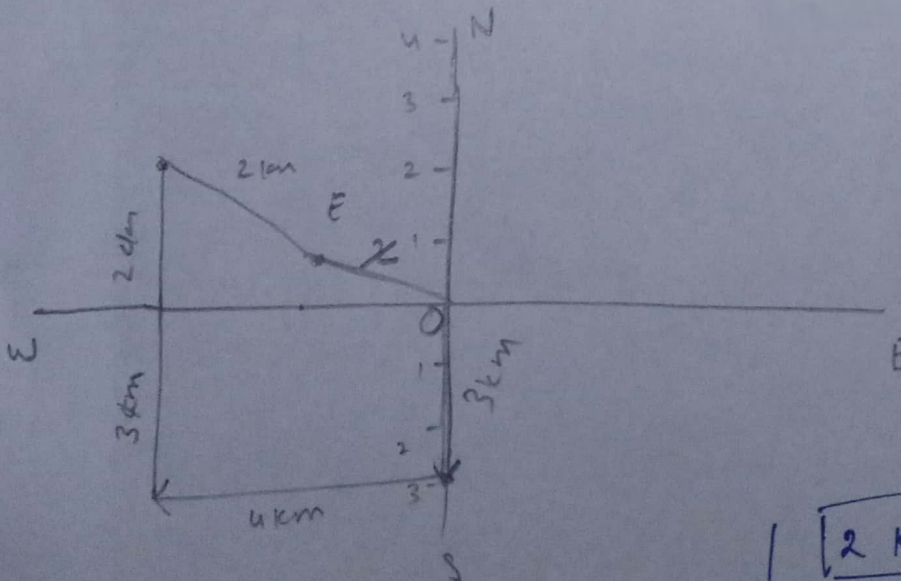
b)

$$\text{South} = 3 \text{ km}$$

$$\text{west} = 4 \text{ km}$$

$$\text{north} = 5 \text{ km}$$

$$\text{East} = 2 \text{ km}$$



$$2 \text{ km far}$$

$$4 \text{ km} = 2 \text{ km} + 2$$

$$4 - 2 = 2$$

$$\begin{aligned} \text{net property} &= 640000 - 400000 - 50000 \\ &= 595000 \end{aligned}$$

$$\begin{array}{r} 1140 \\ 5 \\ \hline 595 \end{array}$$

$$\text{mother's share} = 595000 \times \frac{1}{8}$$

$$\boxed{\text{mother's share} = 74375}$$

$$\text{daughter's share} = 2 + 2 + 1$$

$$\text{Total} = 5$$

$$\text{daughter's share} = (595000 - 74375) \times \frac{1}{5}$$

$$\begin{aligned} &14125 \\ &= \cancel{520625} \times \frac{1}{8} \end{aligned}$$

$$\boxed{\text{daughter's share} = 14125}$$

$$\text{each son's share} = \cancel{520625} \times \frac{2}{5}$$

$$\boxed{\text{each son's share} = 208250}$$

**C**

$$\text{Tah's investment period} = 12$$

$$\text{Usman investment period} = 12 - 8 = 4$$

$$\text{Umar investment period} = 12 - 5 = 7$$

$$\begin{array}{r} 74375 \\ 8 \overline{) 595000} \\ \underline{56} \\ 35 \\ \underline{32} \\ 30 \\ \underline{24} \\ 60 \\ \underline{56} \\ 40 \\ \underline{40} \\ 0 \end{array}$$



$$\begin{aligned} \text{Total investment} &= 180,000 + 105,000 + 120,000 \\ &= 405,000 \end{aligned}$$

---

$$\text{Tahir investment} = 15,000 \times 12 = 180,000$$

$$\text{Umar investment} = 30,000 \times (12 - 5) = 210,000$$

$$\text{Usman investment} = 45,000 \times 4 = 180,000$$

$$\text{Total investment} = 180,000 + 210,000 + 180,000$$

$$\boxed{\text{Total investment} = 570,000}$$

$$\text{Tahir Profit} = 406000 \times \frac{6}{180000}$$

$$\frac{570000}{19}$$

$$= \frac{128210.5}{2436000}$$

$$\boxed{\text{lahir Profit} = 128210.5}$$

$$\text{Umar Profit}$$

$$= 406000 \times \frac{7}{210000}$$

$$= \frac{149578.94}{2842000}$$

$$\boxed{\text{Umar Profit} = 149578.94}$$

$$\text{Usman Profit} = 406000 \times \frac{6}{180000}$$

$$\boxed{\text{Usman Profit} = 128210.5}$$

148  
 x 9  
 132  
 14  
 x 7  
 132  
 14  
 x 4  
 152  
 14  
 x 5  
 144  
 14  
 x 3  
 147  
 14  
 x 2  
 144  
 14  
 x 1  
 14  
 x 2  
 38  
 149578  
 19 | 2842000  
 19  
 94  
 76  
 182  
 171  
 110  
 95  
 150  
 133  
 170  
 152



## Section - A

Q NO2

Circulatory system:-

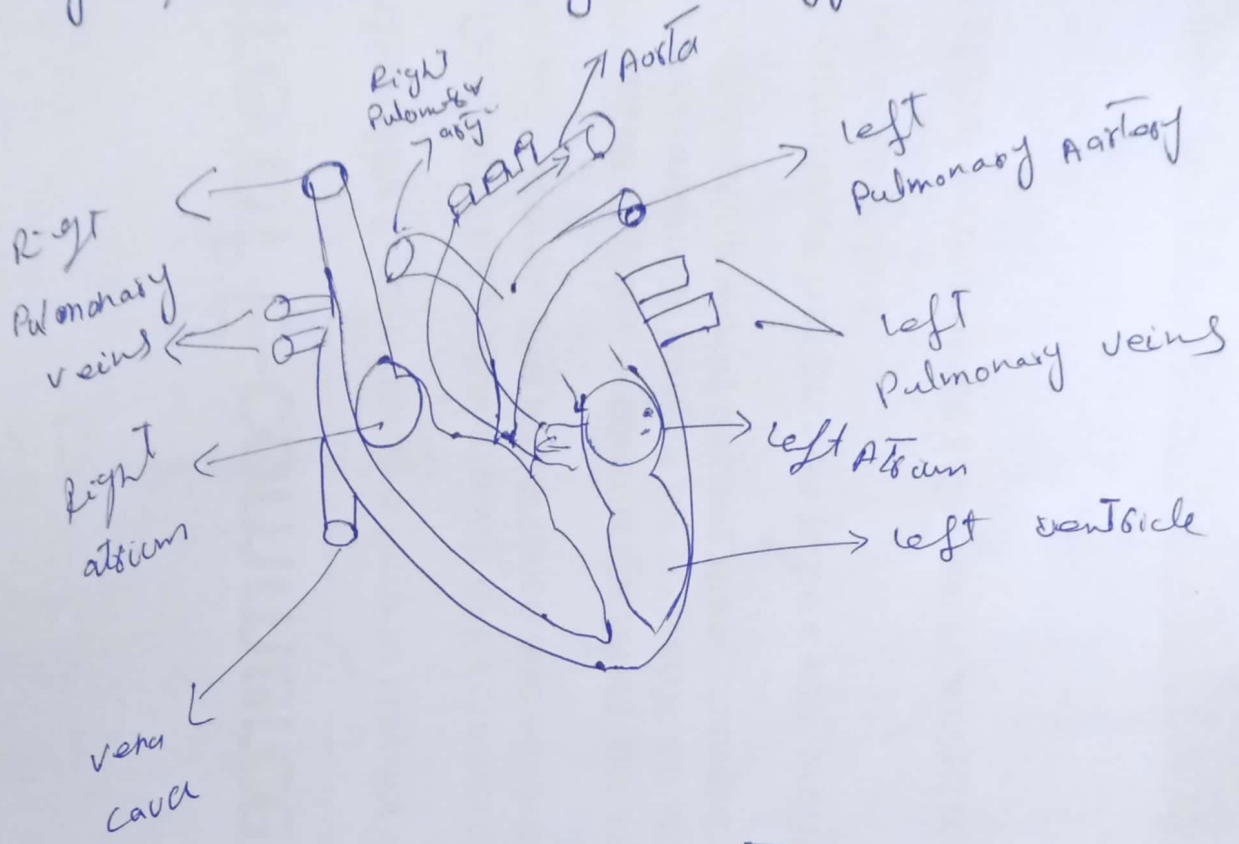
The Blood supply system is called circulatory system which contain heart, different blood vessels and control the flow of blood.

Human Heart:-

Human Heart is a fist size organ that pumps blood through the body. ~~Every~~ Everyday The heart pumps 7600 litres of blood and beating about 0.1 m times. The human heart has four chamber The upper chamber have right and left atria and lower have chamber right and left ventricles. The lower chamber are The powerful pumping chamber. A wall of tissues separate the right and left side of heart. The right side



of the heart supply blood to the body  
that is oxygenated blood and left side  
of the heart carry deoxygenated blood



Human Heart

## b) Carbohydrates:-

Carbohydrates are organic compounds composed of carbon, hydrogen and oxygen atoms.

The classification of carbohydrates are

as follows

- 1) Monosaccharides
- 2) Disaccharides
- 3) Polysaccharides

1) Monosaccharides are the simplest form of carbohydrates and cannot be further hydrolyzed into smaller sugars. They consist of a single sugar unit, as per their name mono, which means one.

example: glucose

## 2) Disaccharides:-

Disaccharides are formed by the chemical bonding of two monosaccharide units through a process called condensation or dehydration synthesis. They can be broken down into two units through hydrolysis.

example: Lactose (glucose + galactose)

## 3) Polysaccharides:-

Polysaccharides are complex forms of carbohydrates, made up of multiple monosaccharide units linked together.

example: starch



C)

## Water Pollution

Def:-

The water that has pollutants and is harmful to living bodies like animals, humans and aquatic life is called water pollution.

Types:-

Surface Pollution:-

This occurs when pollutants enter water bodies on the surface, such as rivers, lakes, ponds, it includes various type of contamination like industrial discharges and spills etc.

Ground water Pollution:-

It happens when pollutants seep into underground water reservoirs. This can result from improper disposal of hazardous materials.

Oil Pollution:-

oil spills from maritime



accidents and the oil spill and coat the water surface, affecting marine life and coastal ecosystems

## Chemical Pollution:-

chemicals pollutants called chemical pollution. affecting food chain, human health.

## Cause:-

### 1) Agricultural Activities:-

the use of fertilizers can wash off into rivers and lakes, causing nutrient pollution and harmful aquatic ecosystems.

### 2) Industrial Discharge:-

industrial chemicals harmful metals, and other pollutants in industrial wastewater released into nearby water bodies that affect the aquatic ecosystem.