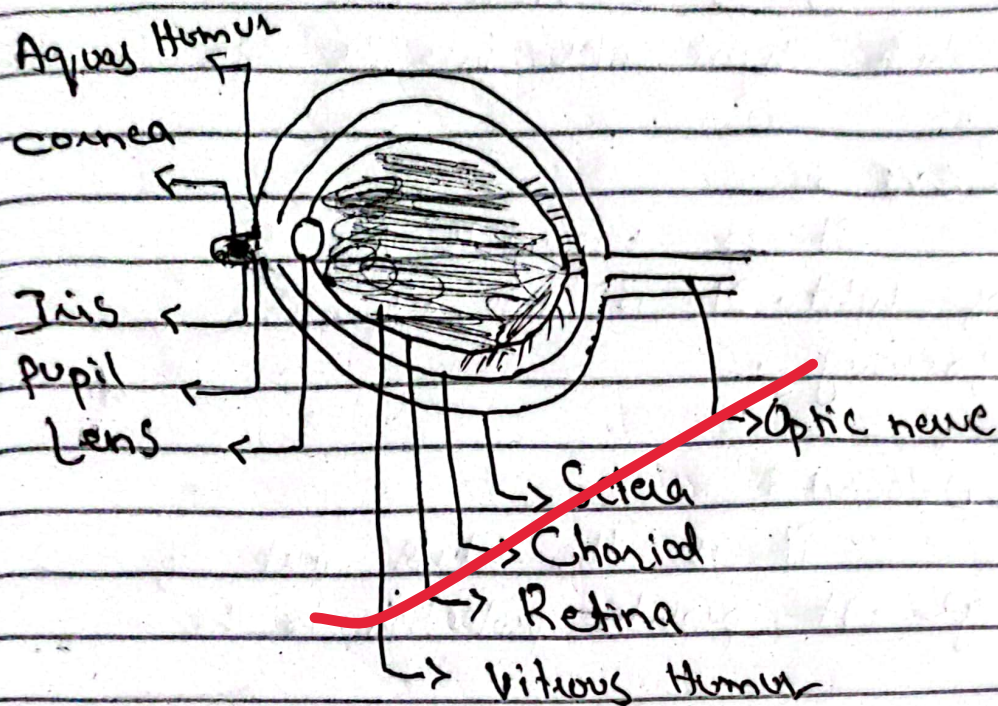


Q = Define Human Eye in detail ?



Eye is a sensory organ which provide sensory information in the form of image.

→ CORNEA :

It is an outermost frontal part of an eye. It provide protection to the eye. The light waves first intrect with cornea. It is responsible for bending of light waves.

→ IRIS :

It is a pigmented part of an eye. It is color part of eye. It controls the movement of pupil.

→ PUPIL :

It is a small hole through which light enters into the eye.

→ LENS :

It is responsible for the reception of light. It is also responsible for focusing.

→ SCLERA :

It is the white part of an eye. It provides protection to the eye.

→ CHOROID :

It is present beneath the eye. It is the reddish part because capillaries are present here.

→ RETINA :

It is the innermost and most sensitive part of an eye. In retina the conversion of light ~~take~~ into image takes place.

→ OPTIC NERVE :

Optic nerve is responsible for the collection of image and transmit it to the brain.

→ AQUEOUS HUMOR :

It is fluid filled region. It is responsible for the transfer of nutrient and gases to such areas which do not have access to the capillaries.

→ VITROUS HUMOR :

It is fluid filled region which is involved in maintaining fluid balance in the eye.

Good!