

8th October, 2024

Q. No-1) Describe the "cell structure". Write at least three differences between an animal cell and plant cell.

Answer

Cell structure:

Cell is the unit of structure and function of living things. Size of the cell is so small that it cannot be seen from the naked eye. It was discovered by Robert Hooke in 1665. There are two types of cells as follows:

Cell

Unicellular
containing single
cell e.g. bacteria

Multicellular
containing
multiple cells
e.g. animals
and plants.

cells are divided into prokaryotic and Eukaryotic cells.

Prokaryotic (bacteria),
Eukaryotic (plants).

→ Difference between plant and Animal cell

Following are some of the differences between plants and Animal cells.

1) Cell Wall :

Cell wall is present in plant cell made of cellulose to form a rigid structure. In animal cell the cell wall is absent but flexible plasma is present instead.

2) Vacuole :

Vacuole is present in plant cell to provide turgor pressure and to store nutrients. Whereas,

in animal cell vacuole is absent.

3) Lysosomes:

In lower plants lysosomes is ~~present~~ ^{absent} rarely.

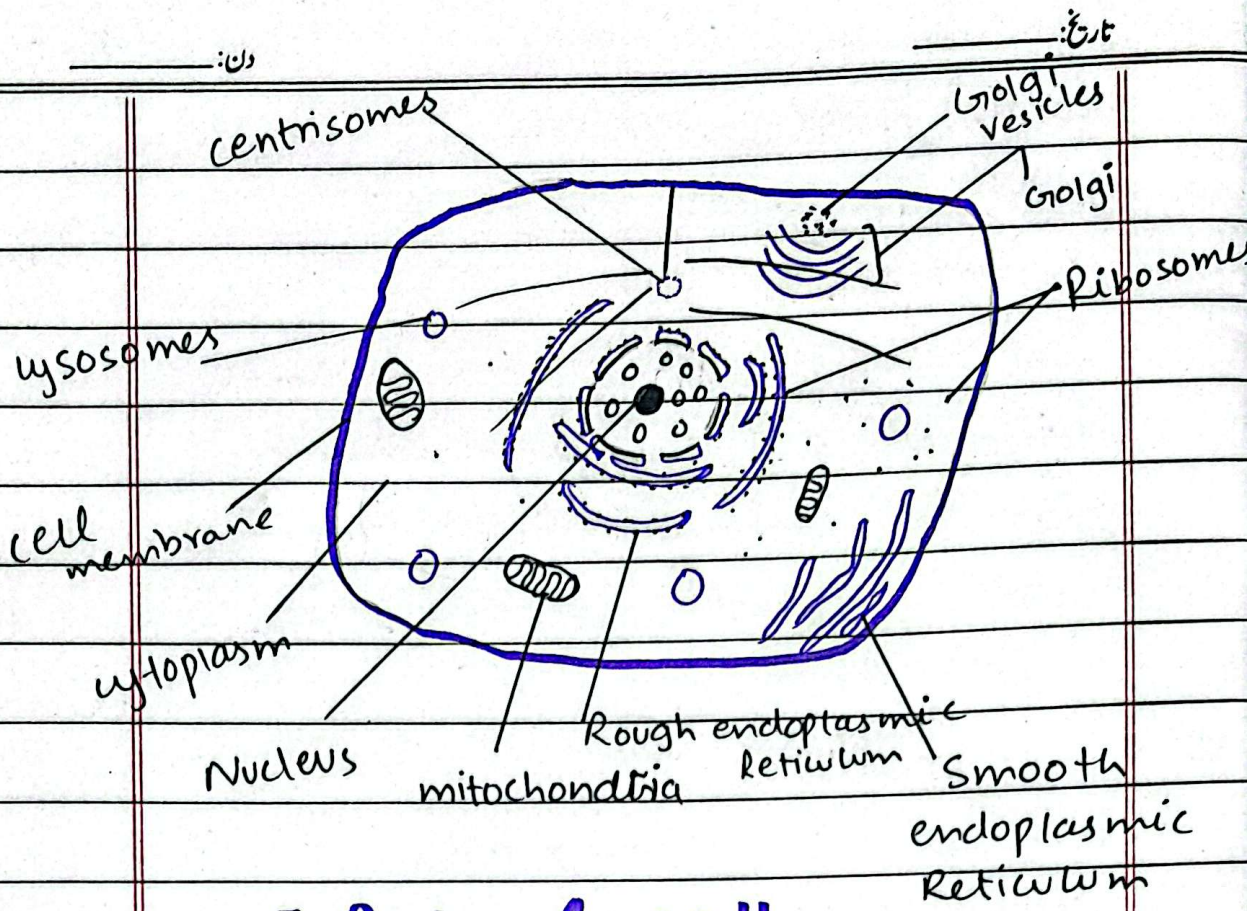
In animal cell lysosomes are present to remove cell debris.

4) Centrioles:

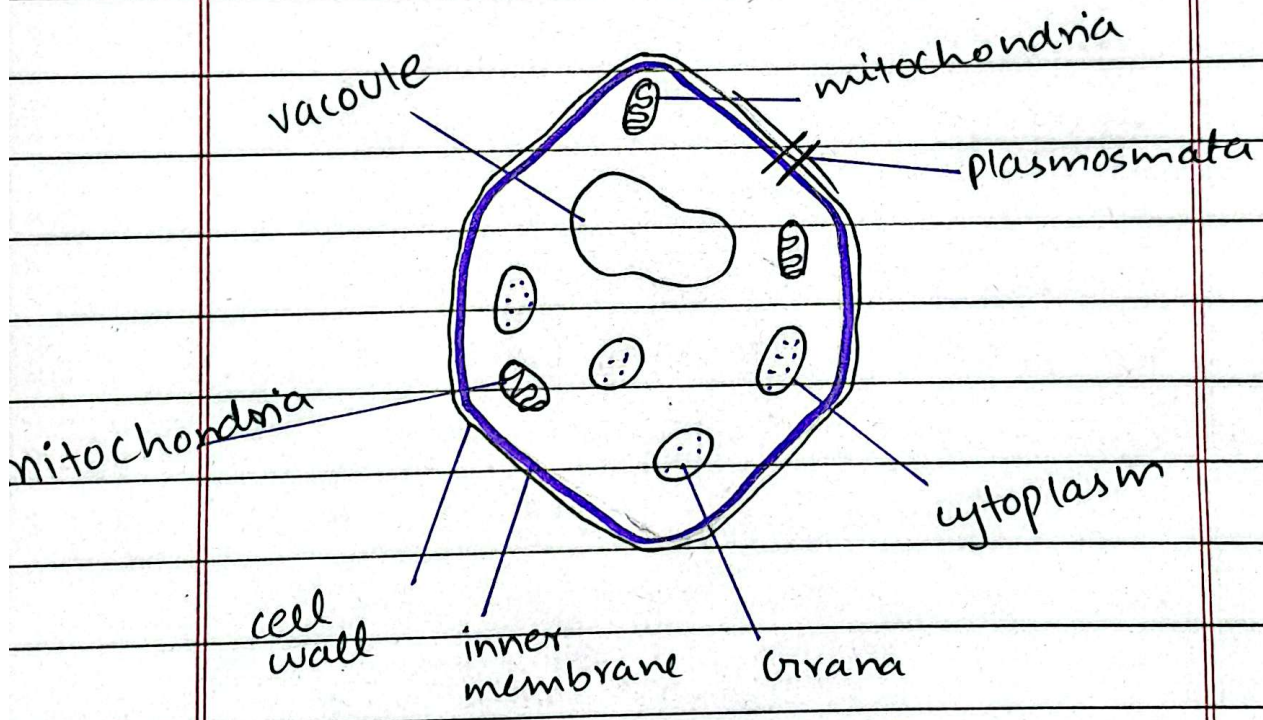
Centrioles is present in lower plants e.g. green algal. In animal cells centrioles are responsible for cell division.

5) Shape:

Plant cells have rigid rectangular shape because of presence of cell wall. On the other hand animal cell has an irregular shape due to the ~~presence~~ absence of cell wall.



≡ Animal cell



≡ Plant cell

