

## LAND POLLUTION

The degradation of the Earth's surface due to improper waste disposal and management practices resulting in the contamination and deterioration of land quality. This type of pollution affects ecosystems, human health and environment.

### TYPES

#### 1 Industrial Waste

A kind of waste that ~~are~~ is generated by industries such as factories, manufacturing plants, textile plants, mining operations etc. The waste generated from industries include heavy metals, such as lead, mercury, chemical by products and hazardous substances like asbestos.

The toxic leaches from industrial waste ~~channels~~ leads to soil and ground water which can potentially affect the environment as well human health.

#### 2 Agriculture Waste

Farmers mostly due to demand for food uses synthetic pesticides

Date: \_\_\_\_\_

M T W T F S

herbicides and fertilizers during farming.

For instance, farmers excessively use nitrogen and phosphorus fertilizers.

These chemicals have the potential to destroy soil quality, reduce biodiversity and lead to runoff that affects the nearby water which further makes the soil unsuitable for agriculture productivity.

### 3 Municipal Waste

Municipal waste refers to household waste, commercial waste and municipal waste. This includes plastic bags, food waste, glass, paper, etc.

When these wastes are not properly managed, they accumulate in landfills, leading to land degradation and methane emission eventually which then affects groundwater.

### 4 Mining Waste

Extraction from minerals and ores from the Earth. Waste from mining includes slag, contaminated water from mining sites and waste materials left after ore extraction.

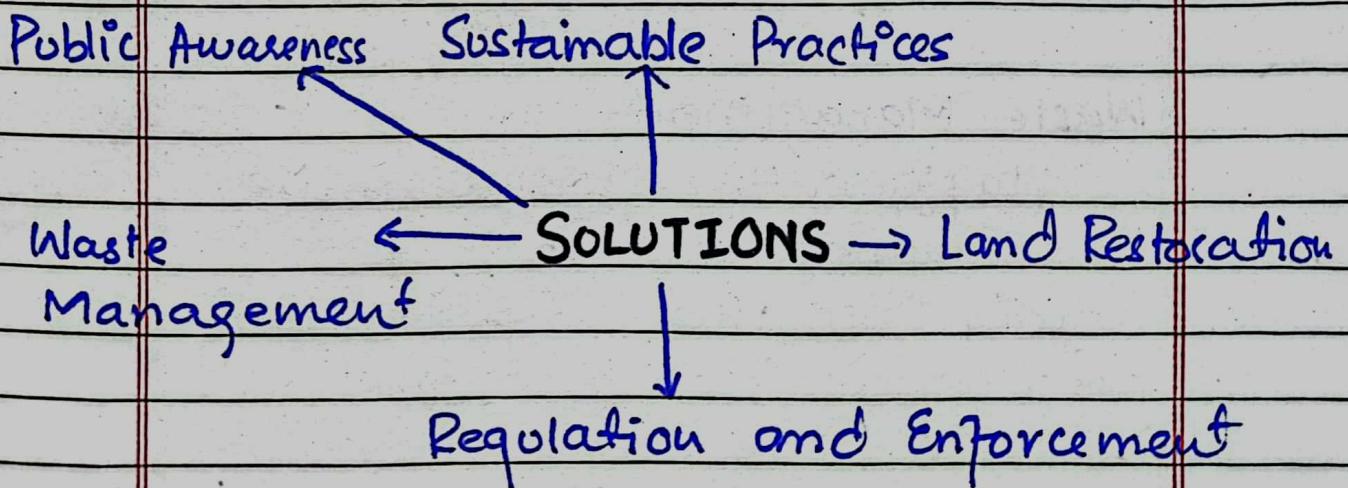
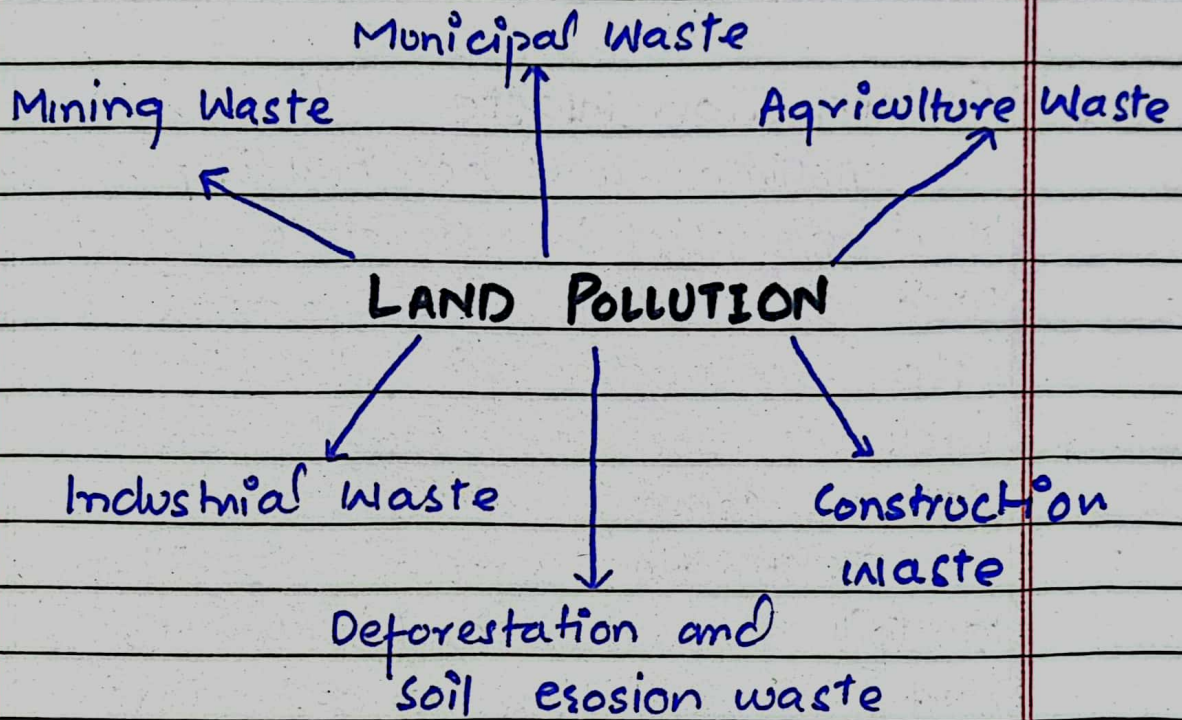
Mining waste can cause severe soil erosion, pollutant-water and habitat destruction. Acid mine

drainage can lead to the formation of highly acidic water that can harm aquatic life.

## 5 Construction Waste

Activities such as building and demolishing structure always lead to debris before and after construction. The debris includes bricks, wood, metal scraps, cements etc.

Construction waste can fill up landfills which contribute to dust, air pollution and water choking in the drains. These waste harm the environment and can have potential impacts on human health.



# Solutions to Land Pollution

## Waste Management

Implementing comprehensive waste management strategies including recycling, composting and proper disposal of hazardous materials can reduce the amount of waste that ends up in landfills and minimize land contamination.

## 2 Public Awareness

Educating the public about the harmful effects of land pollution, its causes and proper management can reduce land pollution.

## 3 Land Restoration

Rehabilitating polluted and degraded land through methods such as soil conservation, reforestation and phytoremediation can help and restore the land.

## 4 Sustainable Practices

Promoting sustainable agricultural and industrial practices, such as reduced use of chemicals, waste minimization and resource efficiency can help and mitigate land pollution.