

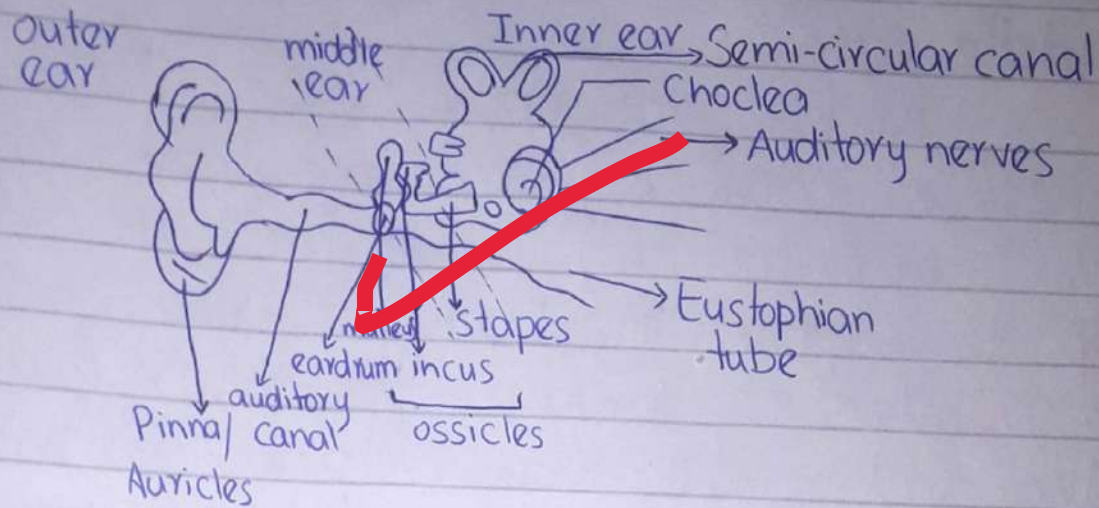
1.

GISA
Past Paper 2017

KINZA-60

Question # 3(c)

Human Ear



Human ear is a sensory organ which helps in hearing and maintaining balance of the body. It consists of three parts

1. Outer Ear
2. Middle Ear
3. Inner Ear

Outer Ear:-

Outer Ear consists of the outermost structure **pinna** or auricle, which help to collect all the sound waves and send them into auditory canal. The next part is the **auditory canal** which is a pathway or

2.

KINZA-60

passage, it transfer the sound waves towards the **eardrum**. The sound waves hit the eardrum and a drum-like vibration is produced which is then transferred to the middle ear.

Middle ear:-

Middle ear consists of three bones ie malleus (hammer), incus (anvil) and stapes (striup). These three bones help to support the body. It also transfer the soundwaves towards the inner ear. The outer and middle ear help in hearing while the inner ear also helps to balance the body.

Inner ear:-

From the stapes (smallest bone of body) sound waves enter into the inner ear through the **semi-circular canal**. The semi-circular canal and vestibule help human in maintaining the equilibrium of the body. The other part of ear is **chochlea**, which is a shell-like coiled structure. It has **auditory nerves** which convert the sound waves into electrical node which are then transferred towards the brain for transmission.

Leave a line space between headings for neatness

3.

KINZA-60

An Eustopian tube is present beneath the ^{inner} middle ear. It is a passage from middle ear to the throat. It helps in maintaining the air pressure between the outside and inside of eardrum. (which helps in hearing).

7.5

(19 minutes
20 seconds)

Overall a good answer

