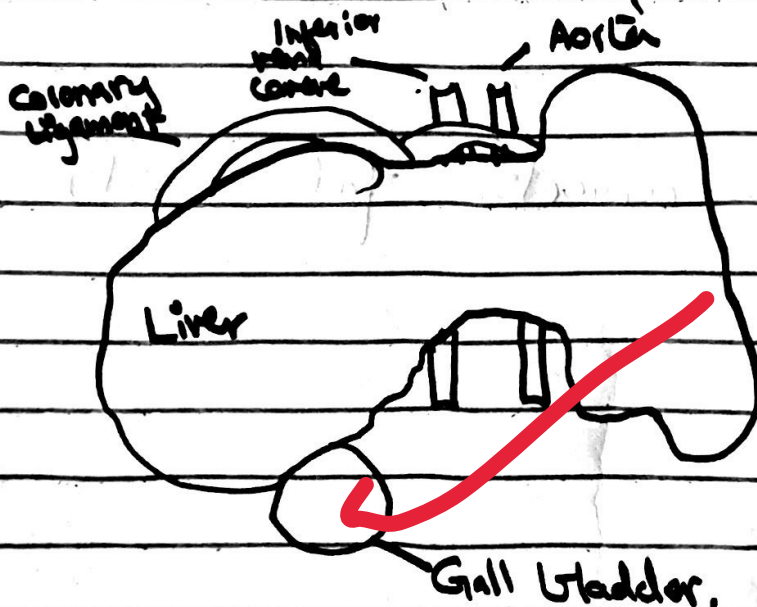


(Q)

Discuss the functioning of liver and pancreas. (5 marks).

FUNCTION OF LIVER:

Liver is a very important part of the digestive system. It secretes bile juice into duodenum; however, it does not secrete any enzyme. Bile is a pigment produced a bile pigment which makes it green. If bile pigment gets trapped in liver it can cause jaundice and even deposit gall stones.



Attempt by giving subheadings preferably

FUNCTION OF PANCREAS:

Pancreas is an important part of digestive system. Since duodenum itself only releases enterokinase, Pancreas release pancreatic juice for the absorption of nutrients. Following are the enzymes released by Pancreas:

1) Sodium Bicarbonate:

The sodium bicarbonate reduces the acidity of the chyme which comes through an acidic nature of stomach.

2) Amylase:

This enzyme converts starch into maltose.

3) Lipase:

The enzyme converts fats into fatty acids.