

## Pastpaper Questions:

2018

Describe cell structure. Write down atleast 3 diff between an animal and plant cell.

### Cell structure:

Cells are basic and structural units of life, containing various organelles that perform specific functions necessary for the survival and operation of the cell. A typical eukaryotic cell, which includes both animal and plant cells, consist of several structures;

1. Cell membrane
2. Nucleus
3. Cytoplasm
4. Mitochondria
5. Ribosomes
6. Endoplasmic reticulum
7. Golgi Apparatus,

- 8. Lysosomes
- 9. Cytoskeleton

These organelles work together to support life functions and cellular processes.

### Three differences between Animal and Plant cells:

Animal cell	Plant cell
1) Lack a cell wall, only have a flexible cell membrane.	1) Have a rigid cell wall made of cellulose to provide structural support and protection.
2) Do not have chloroplast and cannot perform photosynthesis.	2) Contain chloroplasts that enable photosynthesis.
3) Have small and numerous vacuoles.	3) Have a large central vacuole.

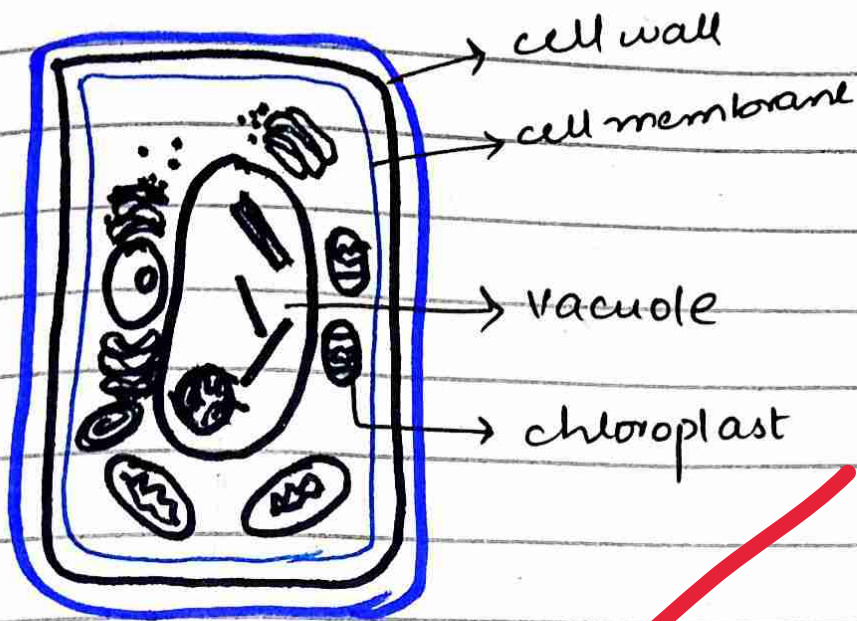


Fig: Plant cell

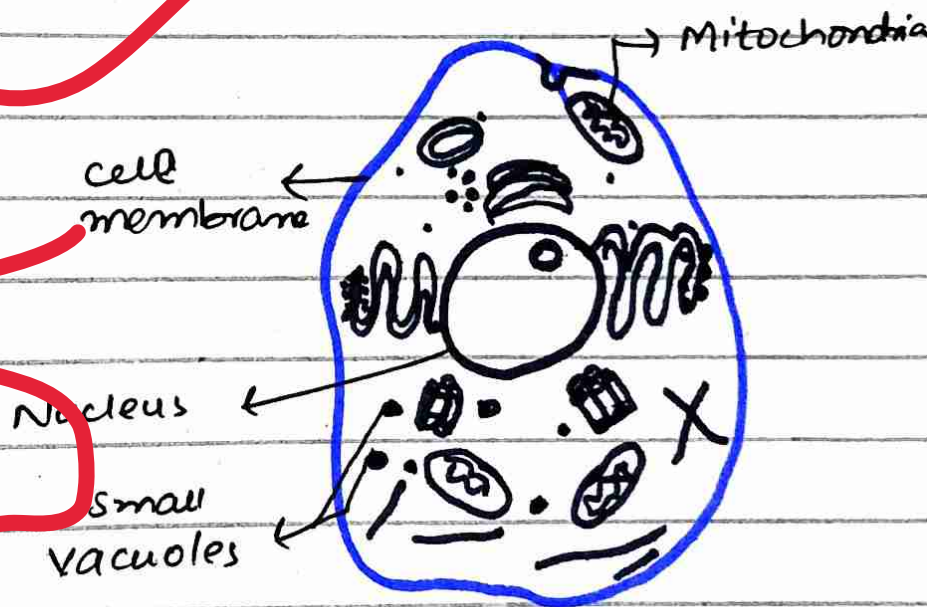


Fig: Animal cell

Good structure and presentation