

mention the full qs statement or the source of the qs.

without that, the answer cannot be evaluated.

Q:2

Answer 1-

Introduction

"Chairman and councillor  
are directly elected  
under the local  
government of the  
UK."

(The UK local government)

Under the Unitary System  
of the UK, the local government system  
work efficiently. In fact, it is a  
hierarchical model led by the Unitary  
State System. In consequence, work  
goes more efficient and smooth. Thus,  
the local government system under the  
Unitary model performs well.

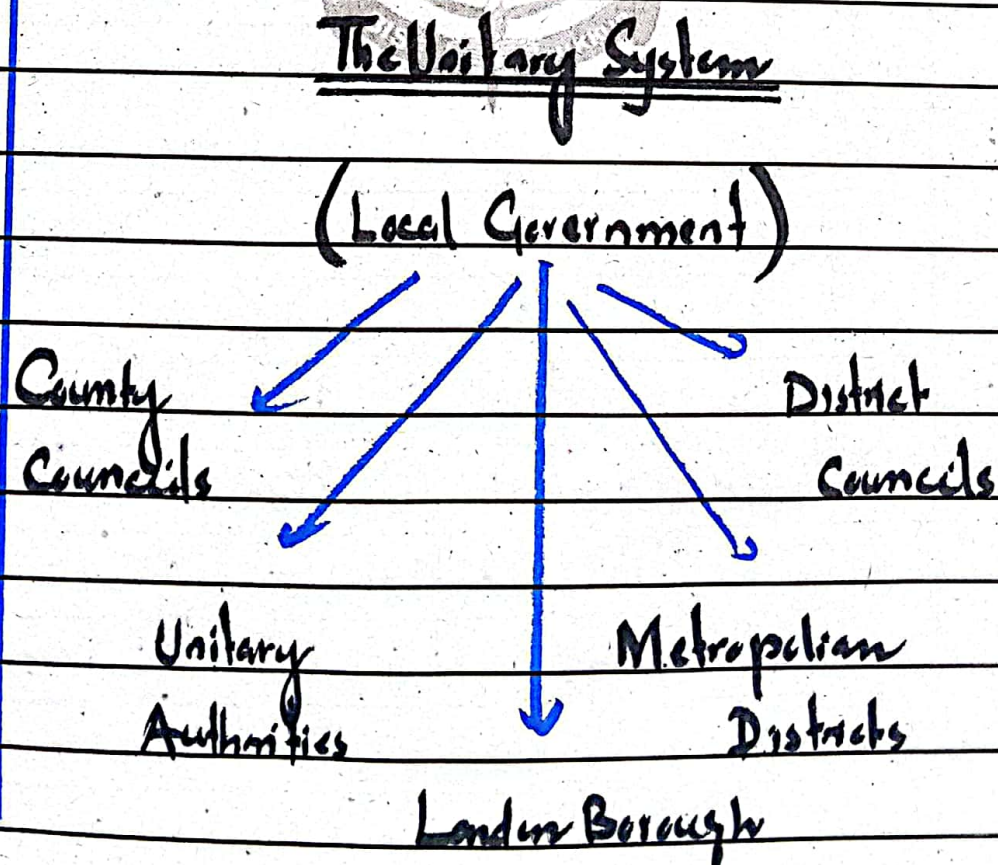
2- A birds eyeriew of the Unitary state  
System of the United Kingdom

"The UK has a supreme  
authority at all."  
(-Stafan)

The UK has a Unitary system. All powers are vested to the parliament, the House of Commons. This shows that the UK system is based on the Unitary model.

3- Under the Unitary System, the performance of the local government

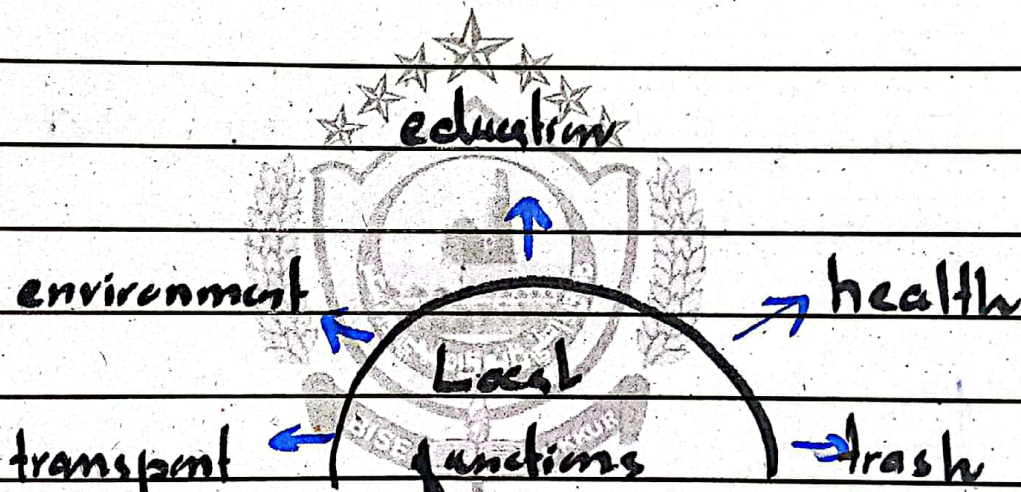
The local government has five main types:



a) **County Councils performances**  
 County Councils work under the local government.

'Chairman is directly elected for 4 years.'

It performs important functions at the local level.



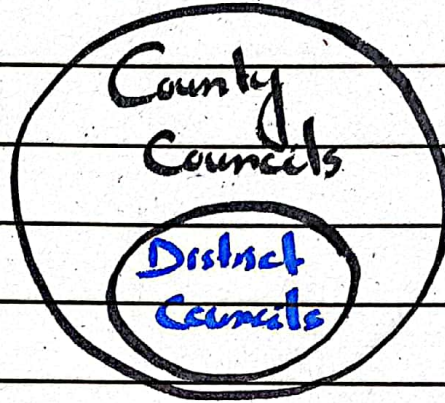
Hence, County Councils are basic level.

b) **District Councils performances**

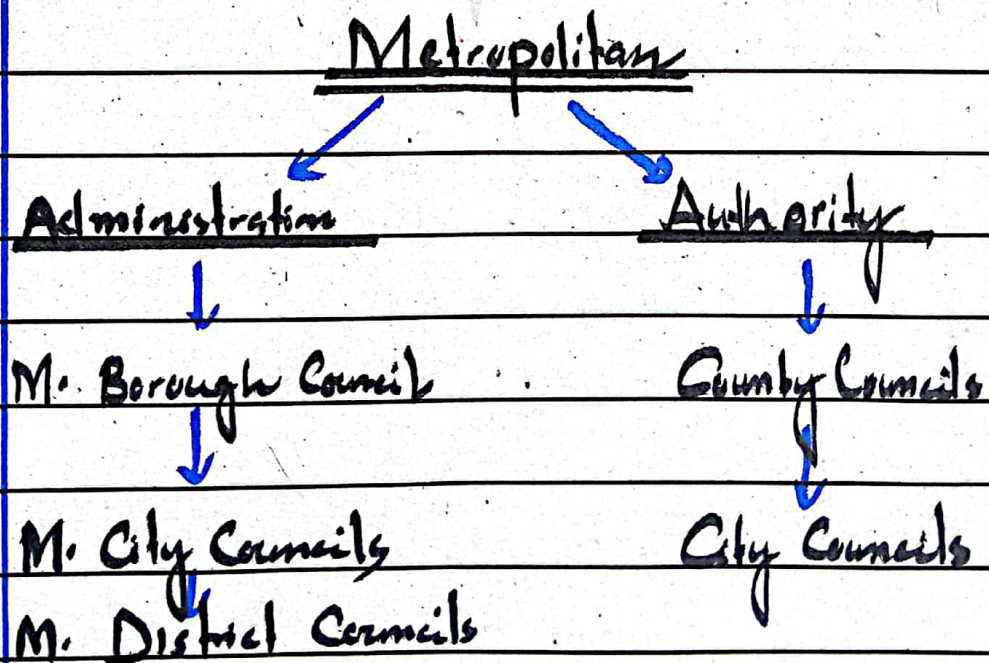
Along with County Councils, District Councils also perform certain important functions.

'There are many district councils under county councils.'

The same functions also performed by District councils, but in smaller areas.

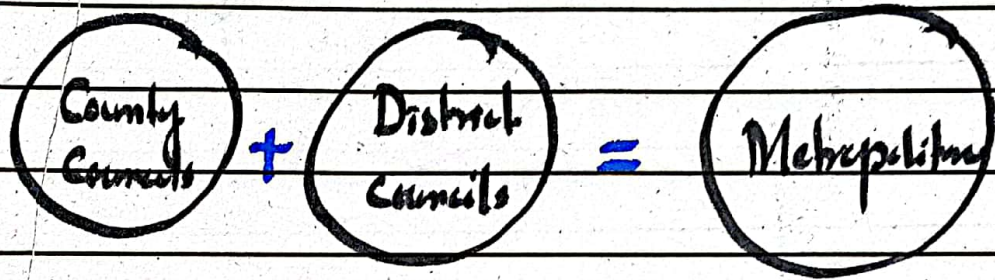


c) Metropolitan County, District, Unitary Authorities, Borough Councils  
It further divided at two levels:



## i) Metropolitan Authority performances

Metropolitan Authority has a dual role of County and District Councils.



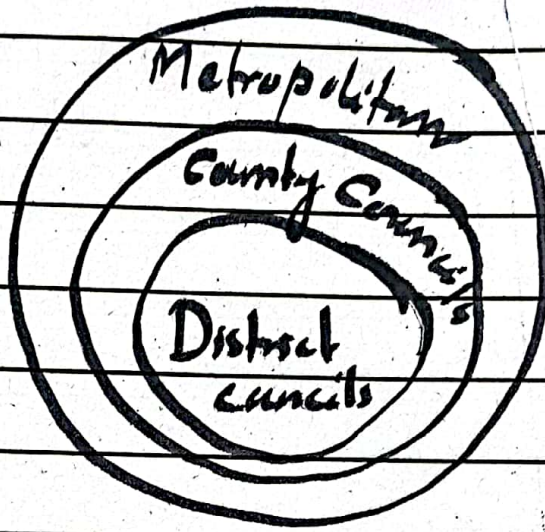
"Education, health, and public livelihood facilities are promoted by Metropolitan Councils."

This shows the link between types of the local government.

## ii) Metropolitan Administration performances

Further, Metropolitan Administration also leads to the combine functioning of County and

## District Councils.



Hence, all functions go under the co-ordination of all types of the government.

d- Trash Communities performances  
Trash Communities also have essence in local government.

Trash communities  
call a meeting at  
least once  
a year

Furthermore,

"Trash Communities submit

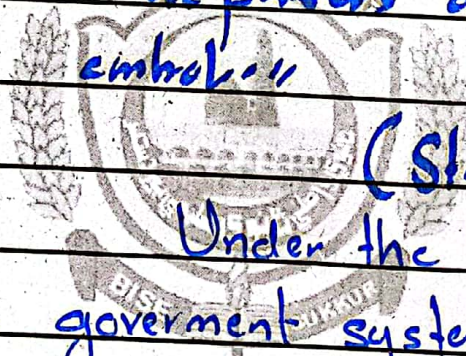
Code \_\_\_\_\_

Q: No.	Answer
1	a report to Councillors."
2	Thus, this process also under goes
3	under check and balance.
4	
5	e- Crime and Police Commission
6	Moreover, Police Commiss
7	ion also elected by, for four years.
8	" Police Commission attempts
9	to reduce crimes
10	at local level for
11	safety of
12	people."
13	Hence, Police Commission has also a
14	due role in the local government.
15	
16	4- Critical Analysis
17	" Under the Unitary System,
18	the local government
19	performs smoothly."
20	

The Unitary System has a supreme authority over local government. Resultantly, it performs as a hierarchical model. This shows how local government goes efficiently.

## 5- Conclusion

• The UK Unitary System has all powers and control.



(Stufen)

Under the Unitary System, the local government system performs efficiently. In fact, it goes under the hierarchical chain. Therefore, it is also maintained as check and balance.