

Q Under the Unitary System, how
the local govt. work in the UK?

Q:2

Answer 1- Introduction

"Chairman and councillor
are directly elected
under the local
government of the
UK."

(The UK local government)

Under the Unitary System
of the UK, the local government system
work efficiently. In fact, it is a
hierarchical model led by the Unitary
State System. In consequence, work
goes more efficient and smooth. Thus,
the local government system under the
Unitary model performs well.

2- A bird's eyeriew of the Unitary State
System of the United Kingdom

"The UK has a supreme
authority at all."
(-Staten)

The UK has a Unitary system. All powers are vested to the parliament, the House of Commons. This shows that the UK system is based on the Unitary model.

3- Under the Unitary System, the performance of the local government

The local government has five main types:

The Unitary System

(Local Government)

County Councils

District Councils

Unitary Authorities

Metropolitan Districts

London Borough

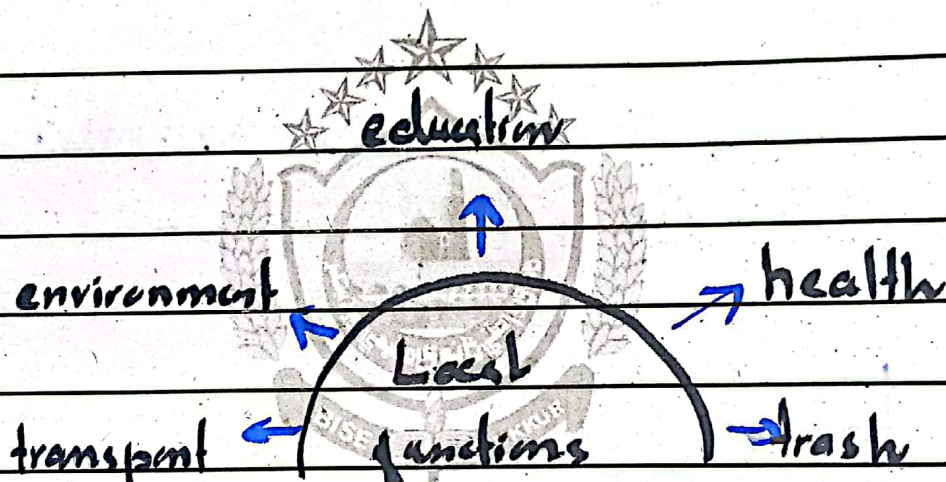
a) County Councils performances

County Councils work under the local government.

'Chairman is directly elected for 4

years.'

It performs important functions at the local level.



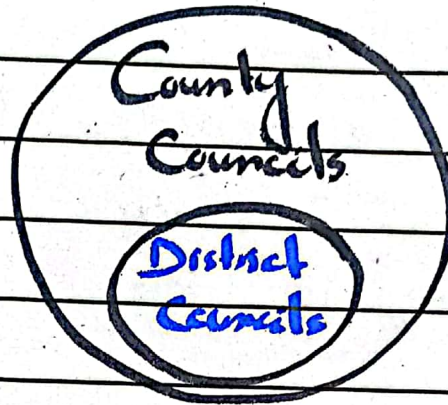
Hence, County Councils are basic level.

b) District Councils performances

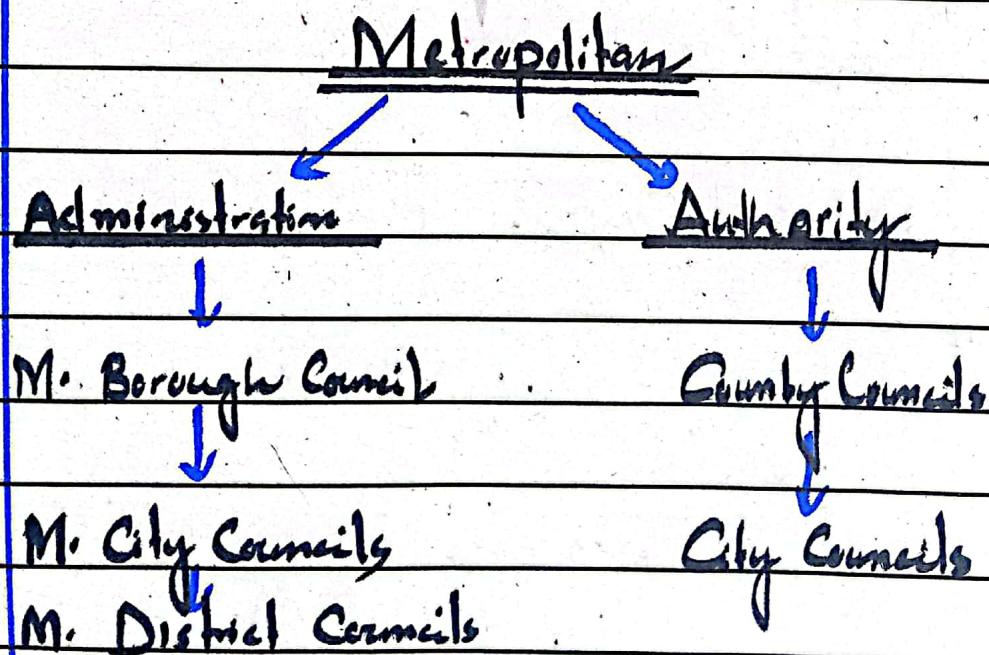
Along with County Councils, District Councils also perform certain important functions.

'There are many district councils under county councils.'

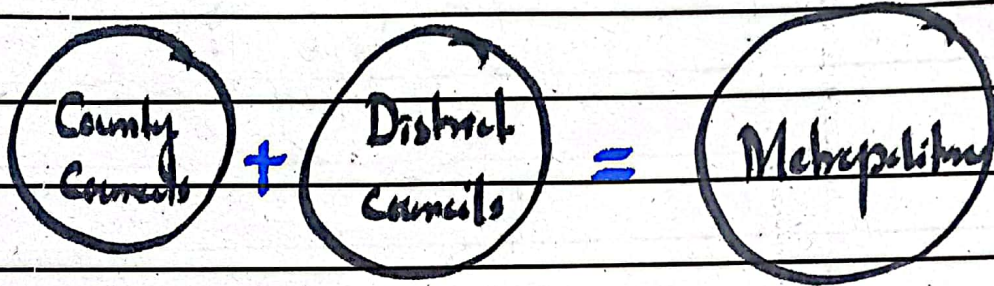
The same functions also performed by District councils, but in smaller areas.



c) Metropolitan County, District, Unitary Authorities, Borough Councils
It further divided at two levels:



i) Metropolitan Authority performs Metropolitan Authority has a dual role of County and District councils.

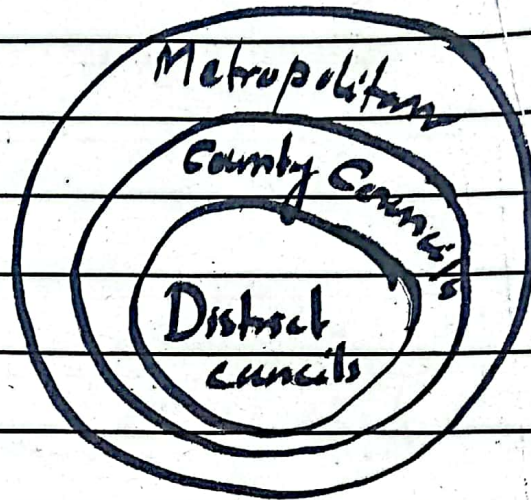


"Education, health, and public livelihood facilities are promoted by Metropolitan Councils."

This shows the link between types of the local government -

ii) Metropolitan Administration performs Further, Metropolitan Administration also leads to the combine functioning of County and

District Councils.



Hence, all functions go under the co-ordination of all types of the government.

d- Trash Communities performances
Trash Communities also have essence in local government.

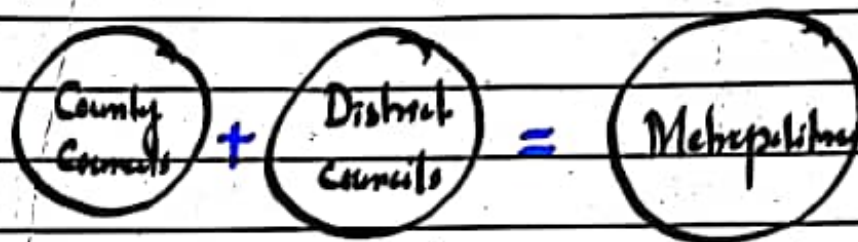
Trash communities
call a meeting at
least once
a year

Furthermore,

"Trash Communities submit

i) Metropolitan Authority performances

Metropolitan Authority has a dual role of County and District councils.



"Education, health, and public localised facilities are promoted by Metropolitan Councils."

This shows the link between types of the local government.

ii) Metropolitan Administration performances

Further, Metropolitan Administration also leads to the combine functioning of County and

16

District Councils:



Hence, all functions go under the co-ordination of all types of the government.

d- Trash Communities performance

Trash Communities also have essence in best government.

Trash communities
 call a meeting at
 least once
 a year

Furthermore,

"Trash Communities submit

Code _____

Q: No.	Answer
1	a report to Councillors."
2	Thus, this process also under goes
3	under check and balance.
4	
5	e- Crime and Police Commission
6	Moreover, Police Commission
7	is also elected by, for four years.
8	" Police Commission attempts
9	to reduce crimes
10	at local level for
11	safety of
12	people.
13	Hence, Police Commission has also a
14	due role in the local government.
15	
16	4- Critical Analysis
17	" Under the Unitary System,
18	the local government
19	performs smoothly."
20	

8 " Police Commission attempts
9 to reduce crimes
10 at local level for
11 safety of
12 people.
13 Hence, Police Commission has also a
14 due role in the local government.
15
16 4- Critical Analysis
17 " Under the Unitary System
18 the local government
19 performs smoothly."
20

CS CamScanner

4

The Unitary System has a supreme authority over local government. Resultantly, it performs as a hierarchical model. This shows how local government goes efficiently.

5- Conclusion

" The Unitary System has all powers and control."
(State)

Under the Unitary System, the local government system performs efficiently. In fact, it goes under the hierarchical chain. Therefore, it is also maintained as checks and balance.

8 / 8

Scanner

CS CamScanner